

Upham Brook Trunk Sewer Project Overview and Status

*Henrico County's
Spring Park*



Who we are...



UPHAM BROOK TRUNK SEWER

Key staff contacts:

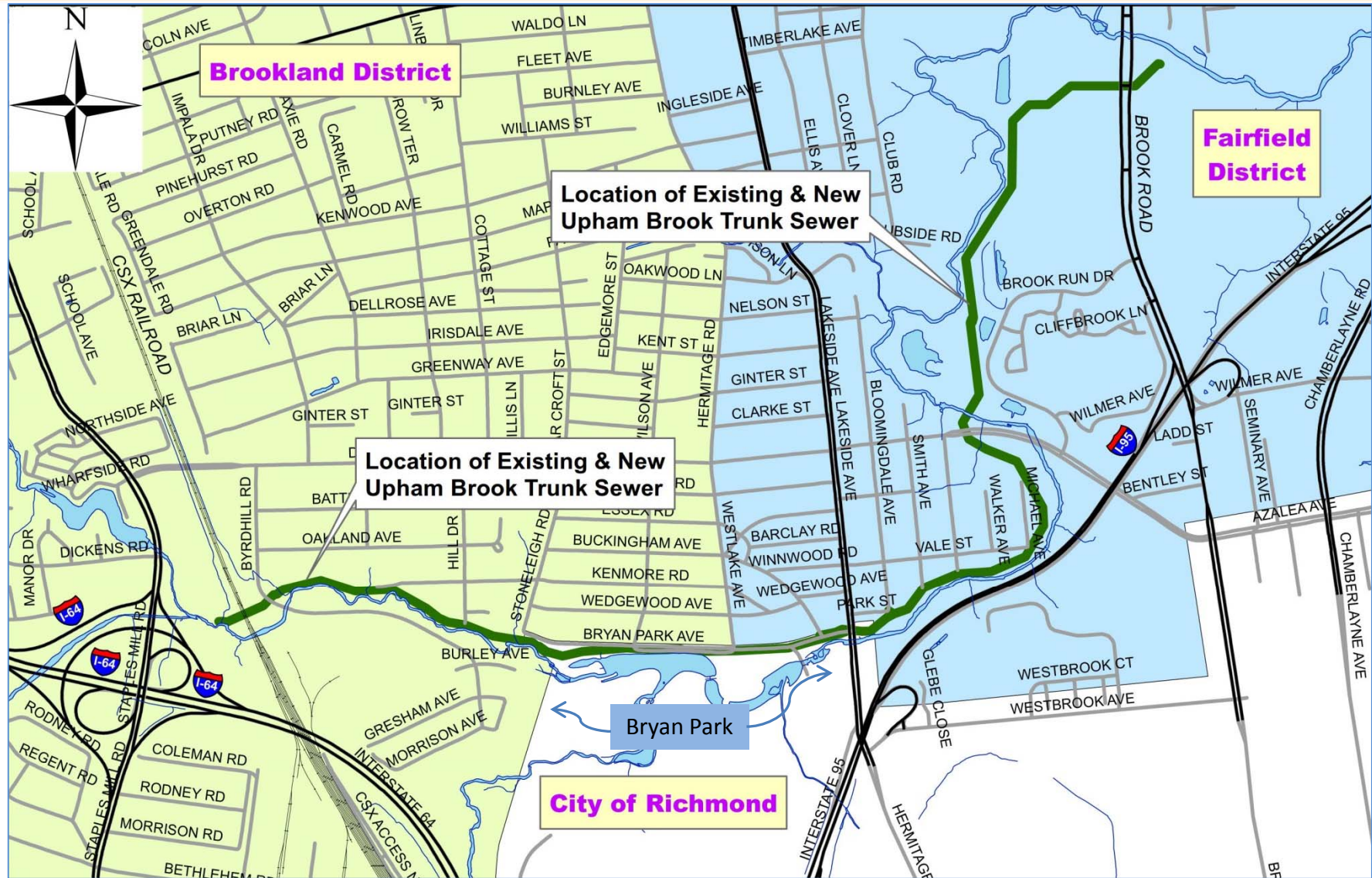
- Arthur Petrini, PE (Director of Public Utilities, County of Henrico)
 - 501-4516; pet12@henrico.us
- Bill Mawyer, PE (Assistant Director of Public Utilities, County of Henrico)
 - 501-4516; maw@henrico.us
- Ralph Claytor, PE (Design Division Director, County of Henrico)
 - 501-4514; cla01@henrico.us
- Lee Maddox, PE (Construction Division Director, County of Henrico)
 - 727-8730; mad06@henrico.us
- Marchelle Sossong, PE (Senior Engineer, County of Henrico)
 - 501-7341; sos@henrico.us
- Kristie Garofalo, PE (Utilities Engineer, County of Henrico)
 - 501-5483; gar05@henrico.us
- Dan Seli, PE (Senior Vice President, Whitman, Requardt & Associates)
 - 272-8700; dseli@wrallp.com
- Charles Luck, PE (Vice President, Whitman, Requardt & Associates)
 - 272-8700; cluck@wrallp.com
- Greg Dempsey, PE (Project Engineer, Whitman, Requardt & Associates)
 - 272-8700; gdempsey@wrallp.com

Project Overview

Upham Brook Trunk Sewer



UPHAM BROOK TRUNK SEWER



Project Overview Aerial



UPHAM BROOK TRUNK SEWER



Upham Brook Trunk Sewer Project Description



UPHAM BROOK TRUNK SEWER

- The purpose of the project is to rehabilitate the sanitary sewer system to reduce the occurrence of sanitary sewer overflows and to provide additional capacity for growth in demands.
- The Project includes construction of approximately 16,000 linear feet of 48-inch and 54-inch diameter gravity trunk sewer.
- The new sewer will be located generally parallel to an existing Henrico County trunk sewer (48-inch and 54-inch) from Staples Mill Road near Dickens Road to just east of Brook Road at Upham Brook. Approximately 1/5 of the new sewer alignment is located within the limits of the City of Richmond.

How will this project be done?



UPHAM BROOK TRUNK SEWER

- Prior to the excavations for the sewer, a specialty contractor will likely perform blasting to loosen the rock below the surface and to allow for easier excavations.

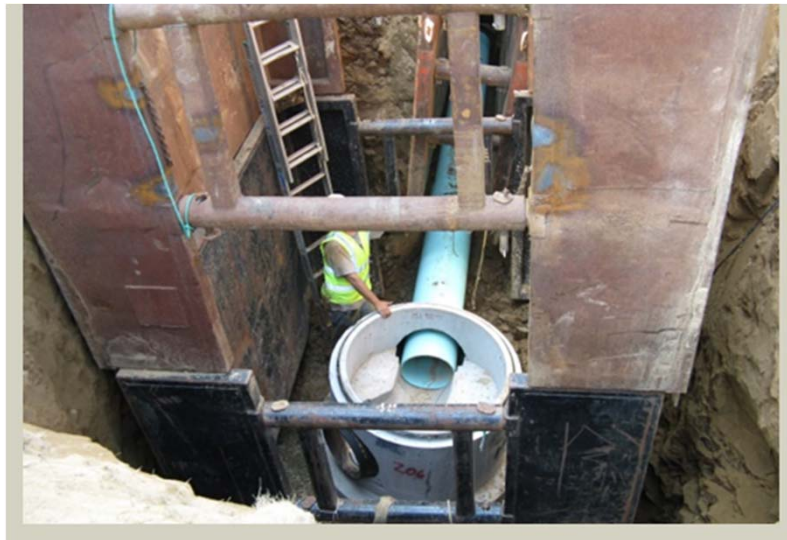


How will this project be done?



UPHAM BROOK TRUNK SEWER

- A general contractor will be hired to dig a trench approximately 15' deep and 7' wide along the pipe route, the pipe will be placed at the bottom of the trench, covered, and the ground surface restored to its existing natural condition.



Tree Removal Remediation



UPHAM BROOK TRUNK SEWER

Tree Removal Remediation for Upham Brook Trunk Sewer

Bryan Park Tree Inventory of Tree Loss (> 4") including City of Richmond Right-Of-Way

Inventory of Existing Trees to be Removed	# of Trees	Cumulative Diameter
Greater than 4" diameter & in the park	52	881
Greater than 4" diameter & not in the park	9	208
Total	61	1,089

The City of Richmond presently has a contract for planting 1.5" caliper trees at a cost of \$256.00 each.

$$\begin{array}{l} 1,089 / 1.5 = 726 \\ 726 \sim 1.5" \text{ caliper replacement trees} \\ \times \$256.00 \text{ each} \\ \$185,856.00 \end{array}$$

Lost canopy - Compensation amount to be paid to the Enrichmond Foundation: \$185,856.00