



Henrico County

Labor Force Components 2011-2015

**Henrico Planning Department
August 2015**

METHODOLOGY FOR THE 2015 LABOR FORCE COMPONENTS REPORT

The Labor Force Components Report is a summary of employment statistics for Henrico County and other related governments. The statistics are pulled from the Virginia Employment Commission (VEC) website, and Planning Staff calculates an annual average for each statistic. The annual average for the labor force, employment and unemployment statistics is calculated over the 12-month period while the average unemployment rate is calculated using the other three averages as the base rather than an average of each month's unemployment rate. Please note, these statistics don't take into account additional adjustments made to older data by VEC staff after the release of each new round of data. The following definitions describe each statistic more specifically:

- Civilian Labor Force – the non-institutionalized, non-military population age 16 and up
- Employment – the total population in the civilian labor force with either a full-time or part-time job
- Unemployment – the total population in the civilian labor force who don't have a job, are actively looking for a job, and are currently available for work
- Unemployment Rate – the ratio of the Civilian Labor Force classified as unemployed

Area	Period	Civilian Labor Force	Employment	Unemployment	Rate
------	--------	----------------------	------------	--------------	------

2015

United States	Jan-15	156,050,000	146,552,000	9,498,000	6.1%
Virginia	Jan-15	4,223,162	4,014,611	208,551	4.9%
Henrico County	Jan-15	175,940	167,587	8,353	4.7%
Richmond City	Jan-15	111,284	104,957	6,327	5.7%
Chesterfield County	Jan-15	176,149	167,905	8,244	4.7%
Goochland County	Jan-15	10,467	9,983	484	4.6%
Hanover County	Jan-15	55,809	53,456	2,353	4.2%

United States	Feb-15	156,213,000	147,118,000	9,095,000	5.8%
Virginia	Feb-15	4,235,497	4,022,339	213,158	5.0%
Henrico County	Feb-15	175,905	167,415	8,490	4.8%
Richmond City	Feb-15	111,245	104,827	6,418	5.8%
Chesterfield County	Feb-15	176,305	167,752	8,553	4.9%
Goochland County	Feb-15	10,474	9,977	497	4.7%
Hanover County	Feb-15	55,902	53,454	2,448	4.4%

United States	Mar-15	156,318,000	147,635,000	8,682,000	5.6%
Virginia	Mar-15	4,235,194	4,026,484	208,710	4.9%
Henrico County	Mar-15	175,310	166,950	8,360	4.8%
Richmond City	Mar-15	110,924	104,558	6,366	5.7%
Chesterfield County	Mar-15	175,657	167,344	8,313	4.7%
Goochland County	Mar-15	10,465	9,976	489	4.7%
Hanover County	Mar-15	55,745	53,376	2,369	4.2%

United States	Apr-15	156,554,000	148,587,000	7,966,000	5.1%
Virginia	Apr-15	4,258,600	4,065,583	193,017	4.5%
Henrico County	Apr-15	176,027	168,165	7,862	4.5%
Richmond City	Apr-15	111,330	105,312	6,018	5.4%
Chesterfield County	Apr-15	176,418	168,635	7,783	4.4%
Goochland County	Apr-15	10,519	10,076	443	4.2%
Hanover County	Apr-15	56,113	53,892	2,221	4.0%

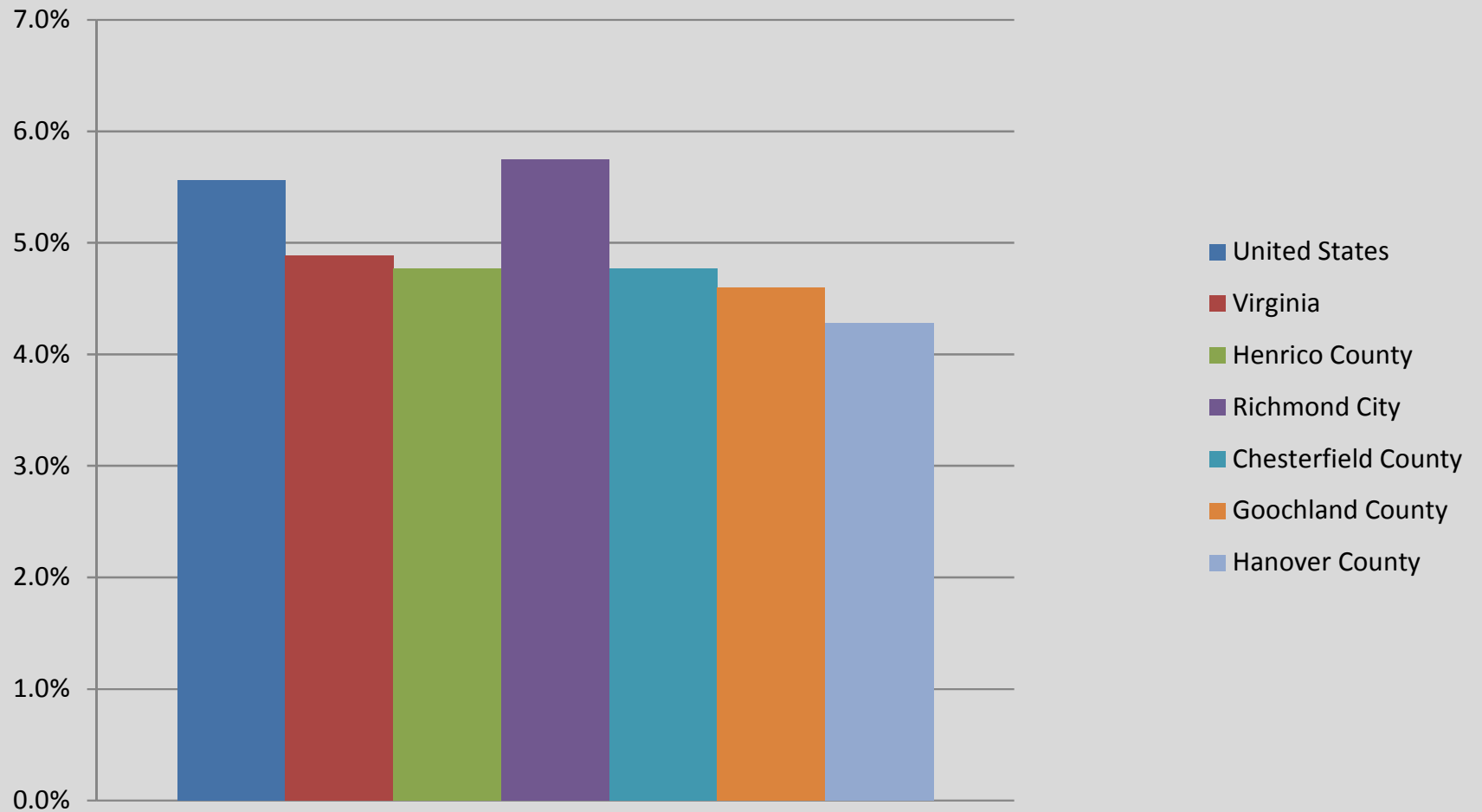
Area	Period	Civilian Labor Force	Employment	Unemployment	Rate
United States	May-15	157,719,000	149,349,000	8,370,000	5.3%
Virginia	May-15	4,293,037	4,080,377	212,660	5.0%
Henrico County	May-15	176,977	168,341	8,636	4.9%
Richmond City	May-15	111,989	105,349	6,640	5.9%
Chesterfield County	May-15	177,476	168,800	8,679	4.9%
Goochland County	May-15	10,561	10,069	492	4.7%
Hanover County	May-15	56,513	54,000	2,513	4.4%

United States	Jun-15	158,283,000	149,645,000	8,638,000	5.5%
Virginia	Jun-15	4,284,558	4,070,273	214,285	5.0%
Henrico County	Jun-15	176,125	167,449	8,676	4.9%
Richmond City	Jun-15	111,442	104,725	6,717	6.0%
Chesterfield County	Jun-15	176,776	167,907	8,869	5.0%
Goochland County	Jun-15	10,497	10,004	493	4.7%
Hanover County	Jun-15	56,326	53,783	2,543	4.5%

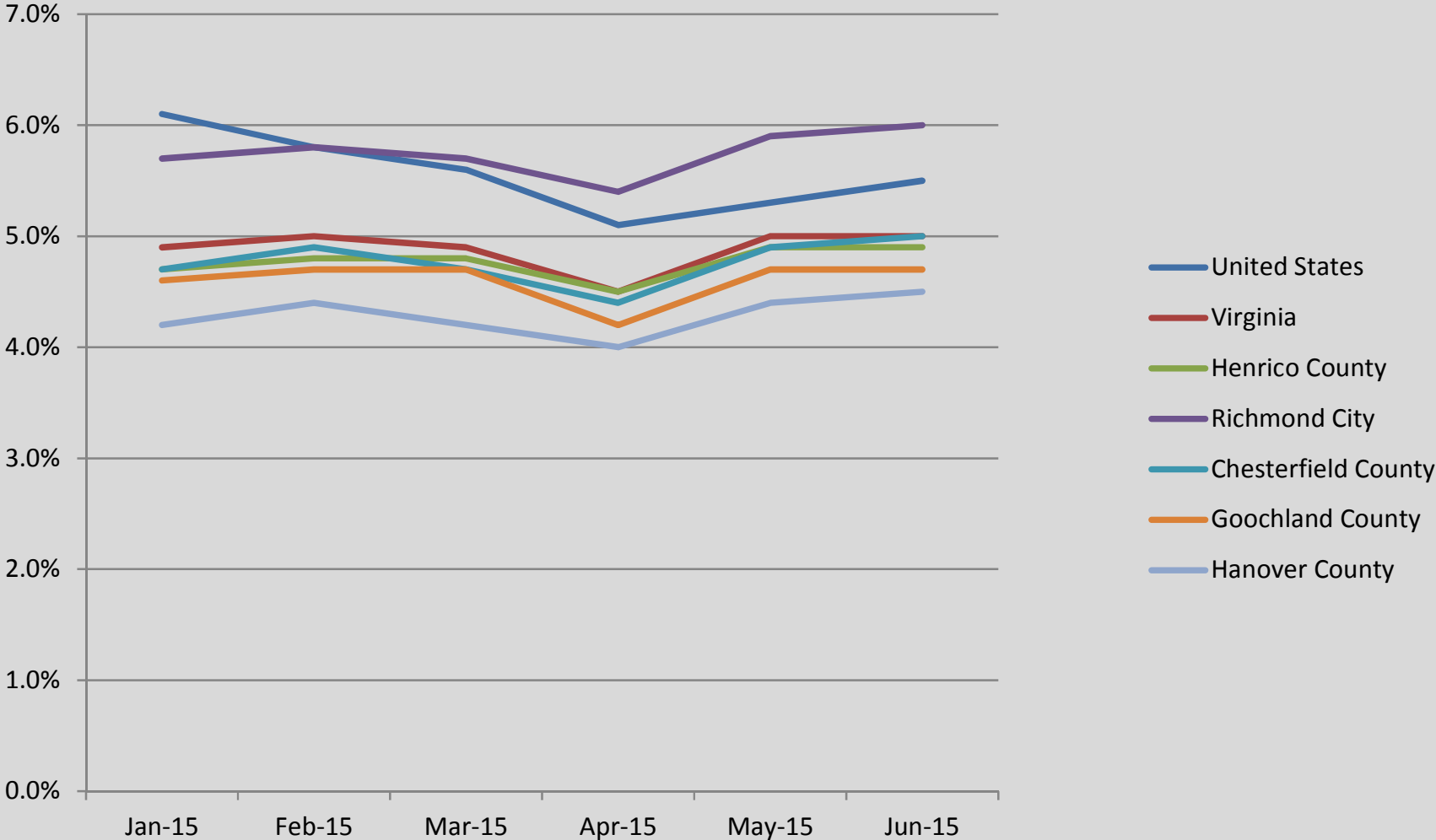
Average 2015

United States	2015	156,856,167	148,147,667	8,708,167	5.6%
Virginia	2015	4,255,008	4,046,611	208,397	4.9%
Henrico County	2015	176,047	167,651	8,396	4.8%
Richmond City	2015	111,369	104,955	6,414	5.8%
Chesterfield County	2015	176,464	168,057	8,407	4.8%
Goochland County	2015	10,497	10,014	483	4.6%
Hanover County	2015	56,068	53,660	2,408	4.3%

Average Unemployment Rate: January - June 2015

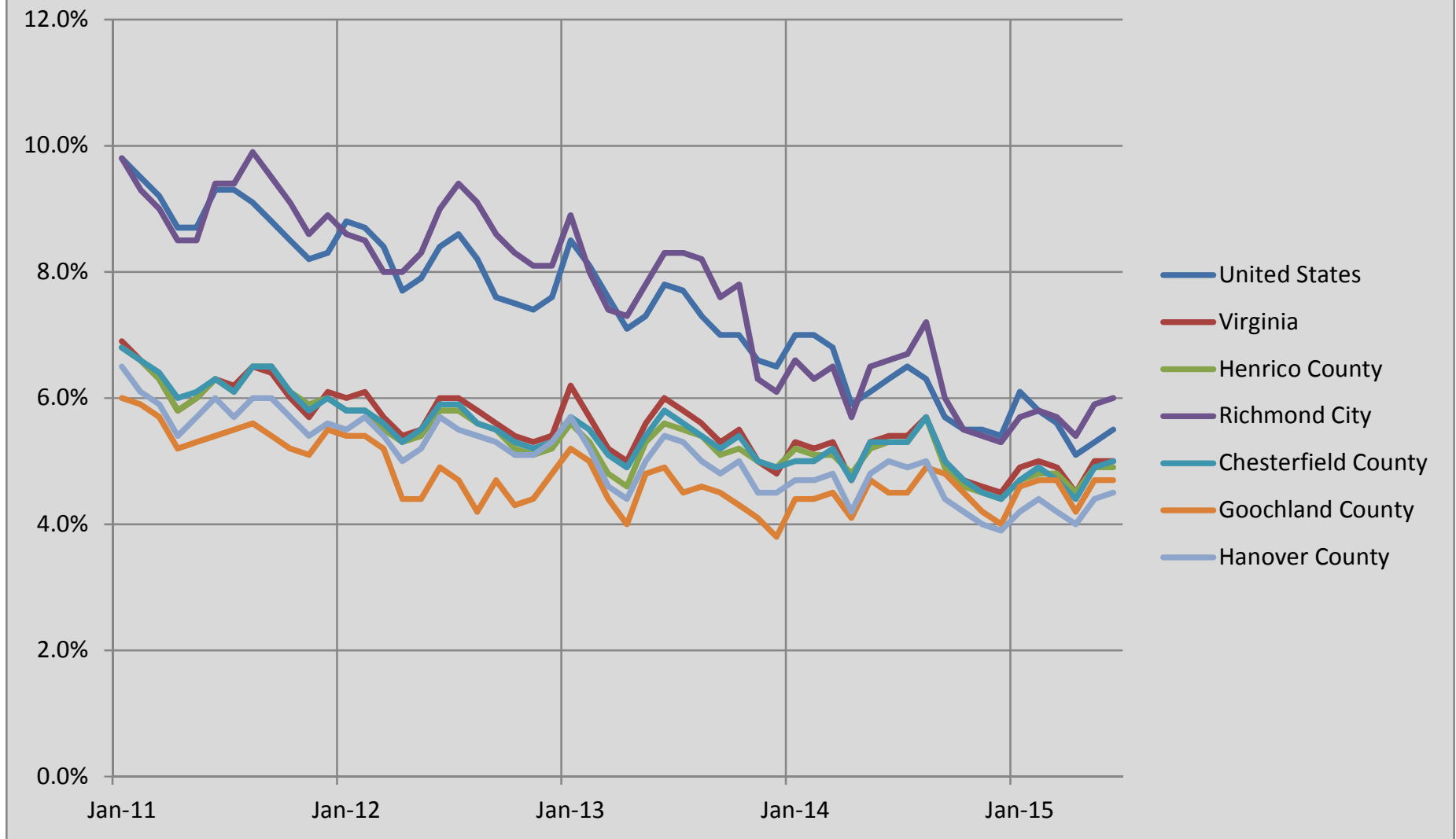


Unemployment Rate: January-June 2015



*Note: These numbers do not reflect adjustments made by VEC in subsequent years

Unemployment Rate: January 2011 - June 2015



Area	Period	Civilian Labor Force	Employment	Unemployment	Rate
------	--------	----------------------	------------	--------------	------

2014

United States	Jan-14	154,381,000	143,526,000	10,855,000	7.0%
Virginia	Jan-14	4,235,534	4,010,305	225,229	5.3%
Henrico County	Jan-14	177,415	168,195	9,220	5.2%
Richmond City	Jan-14	104,078	97,245	6,833	6.6%
Chesterfield County	Jan-14	179,661	170,606	9,055	5.0%
Goochland County	Jan-14	11,524	11,021	503	4.4%
Hanover County	Jan-14	55,736	53,124	2,612	4.7%

United States	Feb-14	155,027,000	144,134,000	10,893,000	7.0%
Virginia	Feb-14	4,275,929	4,052,429	223,500	5.2%
Henrico County	Feb-14	179,190	170,039	9,151	5.1%
Richmond City	Feb-14	104,913	98,311	6,602	6.3%
Chesterfield County	Feb-14	181,634	172,476	9,158	5.0%
Goochland County	Feb-14	11,656	11,142	514	4.4%
Hanover County	Feb-14	56,354	53,706	2,648	4.7%

United States	Mar-14	155,627,000	145,090,000	10,537,000	6.8%
Virginia	Mar-14	4,315,035	4,088,241	226,794	5.3%
Henrico County	Mar-14	180,941	171,683	9,258	5.1%
Richmond City	Mar-14	106,119	99,262	6,857	6.5%
Chesterfield County	Mar-14	183,645	174,144	9,501	5.2%
Goochland County	Mar-14	11,780	11,250	530	4.5%
Hanover County	Mar-14	56,937	54,225	2,712	4.8%

United States	Apr-14	154,845,000	145,767,000	9,079,000	5.9%
Virginia	Apr-14	4,306,107	4,105,100	201,007	4.7%
Henrico County	Apr-14	180,923	172,314	8,609	4.8%
Richmond City	Apr-14	105,636	99,626	6,010	5.7%
Chesterfield County	Apr-14	183,330	174,783	8,547	4.7%
Goochland County	Apr-14	11,776	11,291	485	4.1%
Hanover County	Apr-14	56,817	54,424	2,393	4.2%

Area	Period	Civilian Labor Force	Employment	Unemployment	Rate
United States	May-14	155,841,000	146,398,000	9,443,000	6.1%
Virginia	May-14	4,342,932	4,110,836	232,096	5.3%
Henrico County	May-14	182,122	172,586	9,536	5.2%
Richmond City	May-14	106,707	99,784	6,923	6.5%
Chesterfield County	May-14	184,885	175,060	9,825	5.3%
Goochland County	May-14	11,865	11,309	556	4.7%
Hanover County	May-14	57,277	54,511	2,766	4.8%
United States	Jun-14	156,997,000	147,104,000	9,893,000	6.3%
Virginia	Jun-14	4,339,001	4,103,477	235,524	5.4%
Henrico County	Jun-14	182,099	172,420	9,679	5.3%
Richmond City	Jun-14	106,761	99,687	7,074	6.6%
Chesterfield County	Jun-14	184,736	174,891	9,845	5.3%
Goochland County	Jun-14	11,832	11,298	534	4.5%
Hanover County	Jun-14	57,329	54,458	2,871	5.0%
United States	Jul-14	157,573,000	147,265,000	10,307,000	6.5%
Virginia	Jul-14	4,339,282	4,105,684	233,598	5.4%
Henrico County	Jul-14	182,124	172,506	9,618	5.3%
Richmond City	Jul-14	106,937	99,737	7,200	6.7%
Chesterfield County	Jul-14	184,800	174,979	9,821	5.3%
Goochland County	Jul-14	11,833	11,304	529	4.5%
Hanover County	Jul-14	57,274	54,485	2,789	4.9%
United States	Aug-14	156,434,000	146,647,000	9,787,000	6.3%
Virginia	Aug-14	4,276,249	4,031,540	244,709	5.7%
Henrico County	Aug-14	179,322	169,077	10,245	5.7%
Richmond City	Aug-14	105,308	97,754	7,554	7.2%
Chesterfield County	Aug-14	181,790	171,500	10,290	5.7%
Goochland County	Aug-14	11,655	11,079	576	4.9%
Hanover County	Aug-14	56,238	53,402	2,836	5.0%

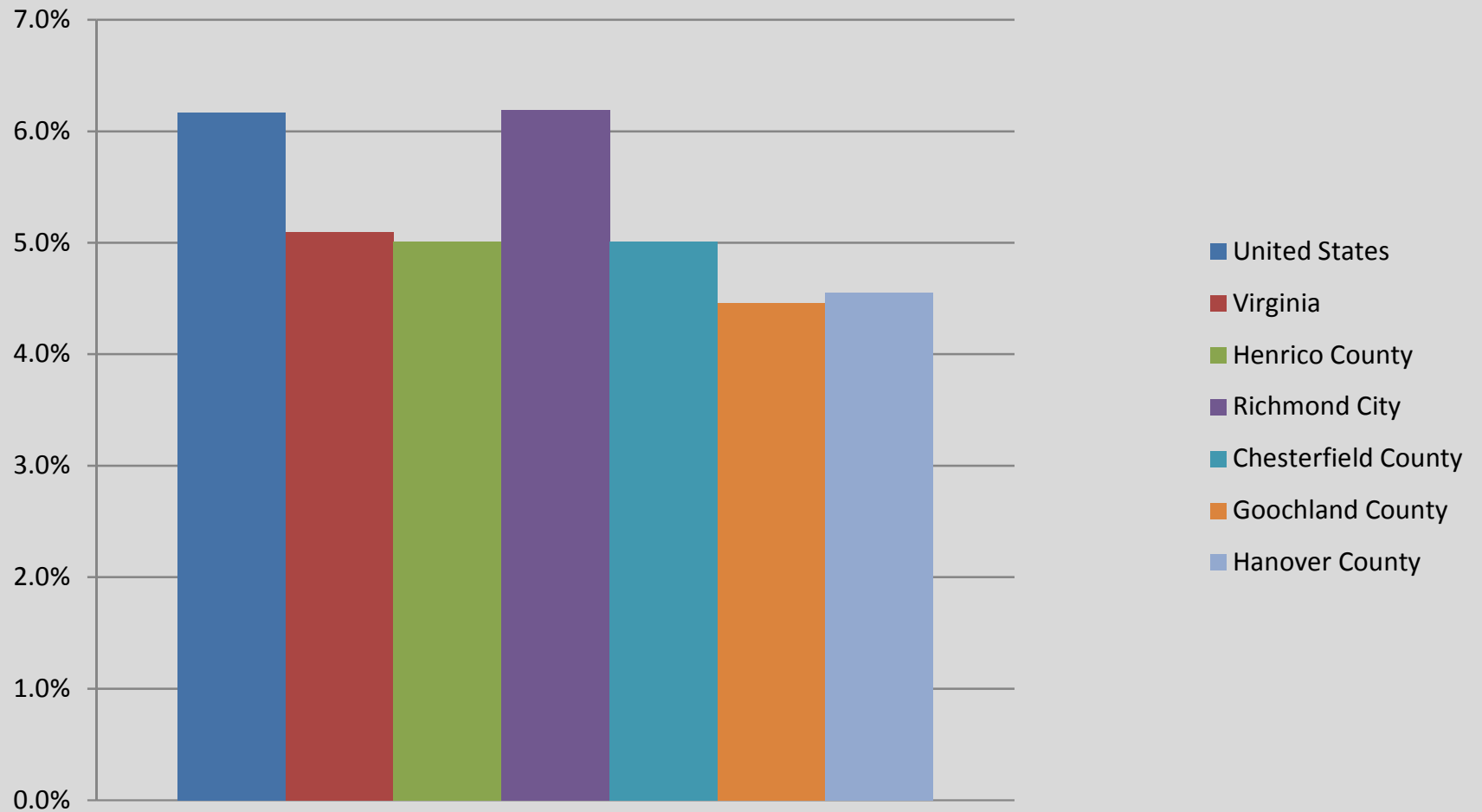
Area	Period	Civilian Labor Force	Employment	Unemployment	Rate
United States	Sep-14	155,903,000	146,941,000	8,962,000	5.7%
Virginia	Sep-14	4,242,170	4,029,651	212,519	5.0%
Henrico County	Sep-14	175,775	167,089	8,686	4.9%
Richmond City	Sep-14	111,248	104,602	6,646	6.0%
Chesterfield County	Sep-14	176,279	167,437	8,842	5.0%
Goochland County	Sep-14	10,459	9,958	501	4.8%
Hanover County	Sep-14	55,875	53,389	2,486	4.4%
United States	Oct-14	156,616,000	147,936,000	8,680,000	5.5%
Virginia	Oct-14	4,252,014	4,052,200	199,814	4.7%
Henrico County	Oct-14	177,006	168,823	8,183	4.6%
Richmond City	Oct-14	111,933	105,728	6,205	5.5%
Chesterfield County	Oct-14	177,481	169,131	8,350	4.7%
Goochland County	Oct-14	10,520	10,051	469	4.5%
Hanover County	Oct-14	56,193	53,834	2,359	4.2%
United States	Nov-14	156,297,000	147,666,000	8,630,000	5.5%
Virginia	Nov-14	4,231,193	4,036,244	194,949	4.6%
Henrico County	Nov-14	176,727	168,695	8,032	4.5%
Richmond City	Nov-14	111,841	105,760	6,081	5.4%
Chesterfield County	Nov-14	177,063	169,073	7,990	4.5%
Goochland County	Nov-14	10,534	10,089	445	4.2%
Hanover County	Nov-14	56,046	53,793	2,253	4.0%
United States	Dec-14	155,521,000	147,190,000	8,331,000	5.4%
Virginia	Dec-14	4,204,166	4,014,531	189,585	4.5%
Henrico County	Dec-14	175,953	168,251	7,702	4.4%
Richmond City	Dec-14	111,203	105,357	5,846	5.3%
Chesterfield County	Dec-14	176,303	168,554	7,749	4.4%
Goochland County	Dec-14	10,435	10,013	422	4.0%
Hanover County	Dec-14	55,824	53,655	2,169	3.9%

Area	Period	Civilian Labor Force	Employment	Unemployment	Rate
------	--------	----------------------	------------	--------------	------

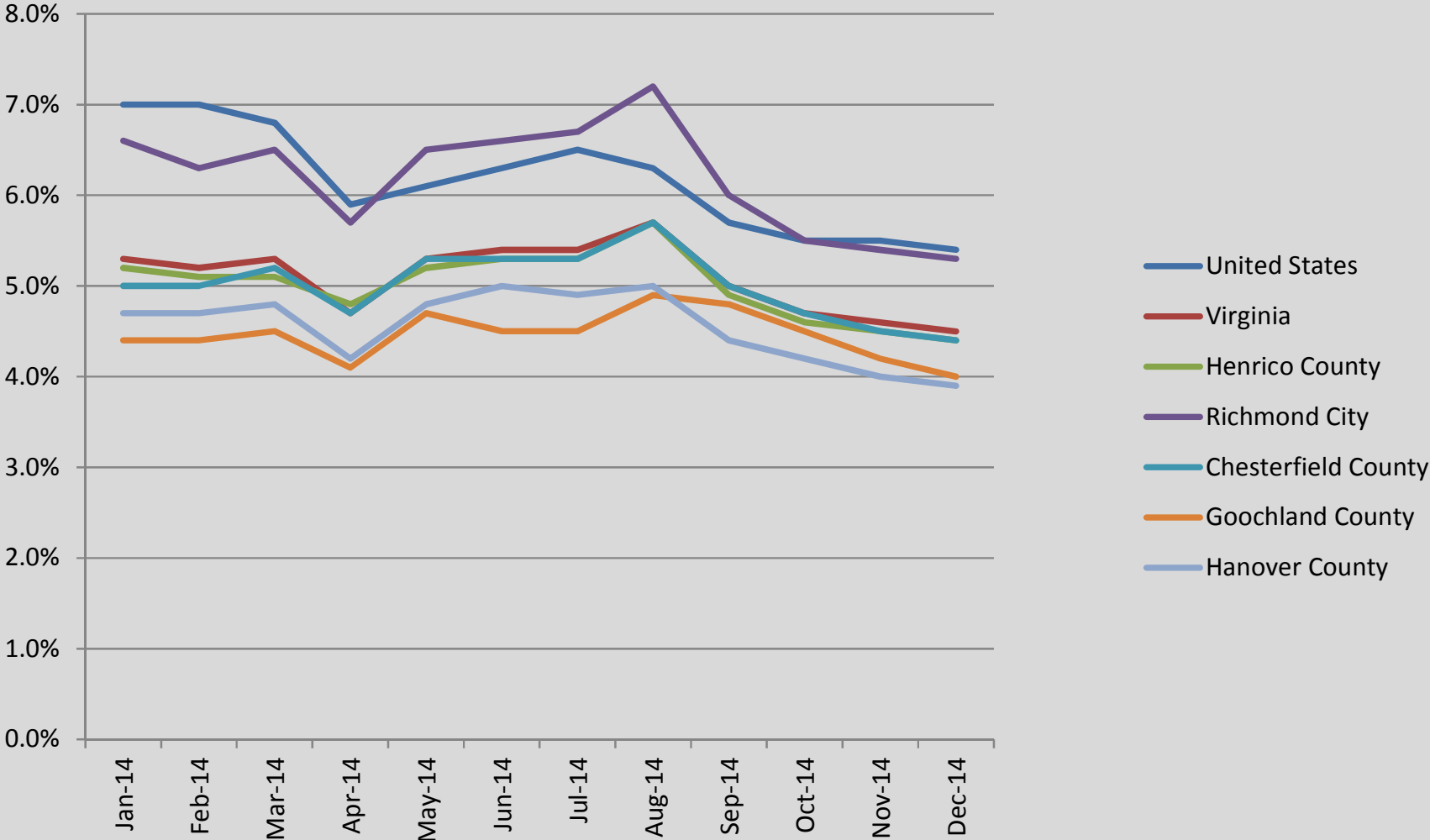
Average 2014

United States	2014	155,921,833	146,305,333	9,616,417	6.2%
Virginia	2014	4,279,968	4,061,687	218,277	5.1%
Henrico County	2014	179,133	170,140	8,993	5.0%
Richmond City	2014	107,724	101,071	6,653	6.2%
Chesterfield County	2014	180,967	171,886	9,081	5.0%
Goochland County	2014	11,322	10,817	505	4.5%
Hanover County	2014	56,492	53,917	2,575	4.6%

Average Unemployment Rate: 2014



Unemployment Rate: 2014



*Note: These numbers do not reflect adjustments made by VEC in subsequent years

Area	Period	Civilian Labor Force	Employment	Unemployment	Rate
2013					
United States	Jan-13	154,794,000	141,614,000	13,181,000	8.5%
Virginia	Jan-13	4,210,559	3,950,371	260,188	6.2%
Henrico County	Jan-13	172,312	162,606	9,706	5.6%
Richmond City	Jan-13	102,298	93,186	9,112	8.9%
Chesterfield County	Jan-13	175,533	165,484	10,049	5.7%
Goochland County	Jan-13	11,707	11,099	608	5.2%
Hanover County	Jan-13	55,084	51,939	3,145	5.7%
United States	Feb-13	154,727,000	142,228,000	12,500,000	8.1%
Virginia	Feb-13	4,189,260	3,948,590	240,670	5.7%
Henrico County	Feb-13	171,752	162,694	9,058	5.3%
Richmond City	Feb-13	101,359	93,236	8,123	8.0%
Chesterfield County	Feb-13	175,196	165,573	9,623	5.5%
Goochland County	Feb-13	11,691	11,105	586	5.0%
Hanover County	Feb-13	54,814	51,967	2,847	5.2%
United States	Mar-13	154,512,000	142,698,000	11,815,000	7.6%
Virginia	Mar-13	4,209,966	3,991,725	218,241	5.2%
Henrico County	Mar-13	172,004	163,760	8,244	4.8%
Richmond City	Mar-13	101,336	93,847	7,489	7.4%
Chesterfield County	Mar-13	175,570	166,659	8,911	5.1%
Goochland County	Mar-13	11,689	11,178	511	4.4%
Hanover County	Mar-13	54,834	52,308	2,526	4.6%
United States	Apr-13	154,739,000	143,724,000	11,014,000	7.1%
Virginia	Apr-13	4,217,840	4,007,266	210,574	5.0%
Henrico County	Apr-13	172,479	164,524	7,955	4.6%
Richmond City	Apr-13	101,693	94,285	7,408	7.3%
Chesterfield County	Apr-13	175,976	167,436	8,540	4.9%
Goochland County	Apr-13	11,703	11,230	473	4.0%
Hanover County	Apr-13	54,957	52,552	2,405	4.4%

Area	Period	Civilian Labor Force	Employment	Unemployment	Rate
United States	May-13	155,734,000	144,432,000	11,302,000	7.3%
Virginia	May-13	4,250,483	4,012,792	237,691	5.6%
Henrico County	May-13	174,404	165,091	9,313	5.3%
Richmond City	May-13	102,600	94,610	7,990	7.8%
Chesterfield County	May-13	177,589	168,012	9,577	5.4%
Goochland County	May-13	11,839	11,269	570	4.8%
Hanover County	May-13	55,499	52,733	2,766	5.0%
United States	Jun-13	157,089,000	144,841,000	12,248,000	7.8%
Virginia	Jun-13	4,264,804	4,010,753	254,051	6.0%
Henrico County	Jun-13	174,244	164,505	9,739	5.6%
Richmond City	Jun-13	102,767	94,274	8,493	8.3%
Chesterfield County	Jun-13	177,669	167,416	10,253	5.8%
Goochland County	Jun-13	11,812	11,229	583	4.9%
Hanover County	Jun-13	55,552	52,545	3,007	5.4%
United States	Jul-13	157,196,000	145,113,000	12,083,000	7.7%
Virginia	Jul-13	4,297,479	4,047,378	250,101	5.8%
Henrico County	Jul-13	175,185	165,585	9,600	5.5%
Richmond City	Jul-13	103,523	94,893	8,630	8.3%
Chesterfield County	Jul-13	178,594	168,515	10,079	5.6%
Goochland County	Jul-13	11,839	11,302	537	4.5%
Hanover County	Jul-13	55,835	52,890	2,945	5.3%
United States	Aug-13	155,971,000	144,509,000	11,462,000	7.3%
Virginia	Aug-13	4,216,036	3,981,767	234,269	5.6%
Henrico County	Aug-13	172,033	162,803	9,230	5.4%
Richmond City	Aug-13	101,650	93,299	8,351	8.2%
Chesterfield County	Aug-13	175,181	165,684	9,497	5.4%
Goochland County	Aug-13	11,642	11,112	530	4.6%
Hanover County	Aug-13	54,747	52,002	2,745	5.0%

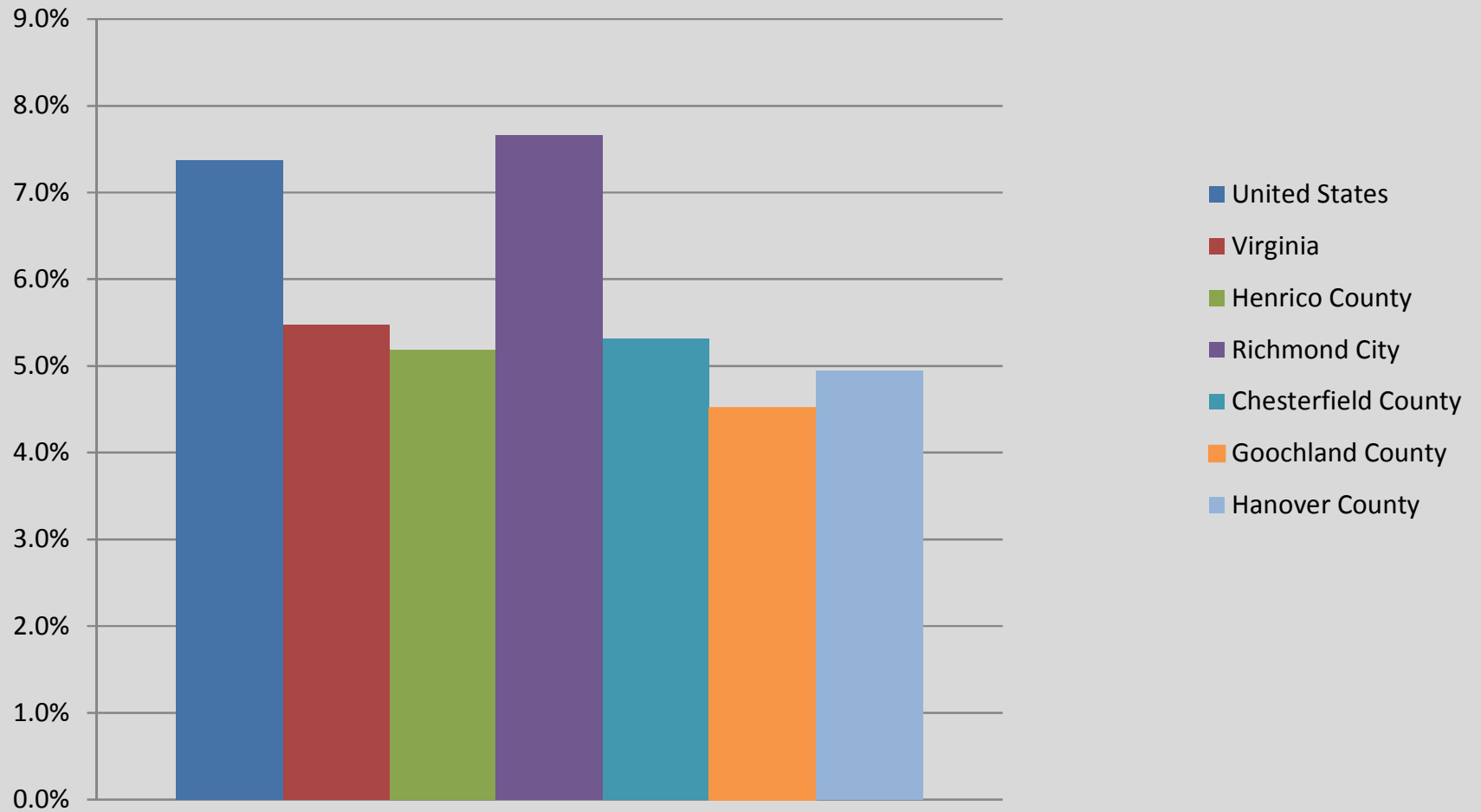
Area	Period	Civilian Labor Force	Employment	Unemployment	Rate
United States	Sep-13	155,536,000	144,651,000	10,885,000	7.0%
Virginia	Sep-13	4,231,740	4,007,664	224,076	5.3%
Henrico County	Sep-13	173,289	164,478	8,811	5.1%
Richmond City	Sep-13	101,957	94,258	7,699	7.6%
Chesterfield County	Sep-13	176,574	167,389	9,185	5.2%
Goochland County	Sep-13	11,752	11,227	525	4.5%
Hanover County	Sep-13	55,167	52,537	2,630	4.8%
United States	Oct-13	154,918,000	144,144,000	10,773,000	7.0%
Virginia	Oct-13	4,217,940	3,984,659	233,281	5.5%
Henrico County	Oct-13	173,102	164,068	9,034	5.2%
Richmond City	Oct-13	101,954	94,023	7,931	7.8%
Chesterfield County	Oct-13	176,412	166,971	9,441	5.4%
Goochland County	Oct-13	11,698	11,199	499	4.3%
Hanover County	Oct-13	55,150	52,406	2,744	5.0%
United States	Nov-13	155,046,000	144,775,000	10,271,000	6.6%
Virginia	Nov-13	4,219,833	4,008,671	211,162	5.0%
Henrico County	Nov-13	175,296	166,540	8,756	5.0%
Richmond City	Nov-13	102,775	96,288	6,487	6.3%
Chesterfield County	Nov-13	177,833	168,926	8,907	5.0%
Goochland County	Nov-13	11,381	10,913	468	4.1%
Hanover County	Nov-13	55,105	52,601	2,504	4.5%
United States	Dec-13	154,408,000	144,423,000	9,984,000	6.5%
Virginia	Dec-13	4,209,516	4,005,927	203,589	4.8%
Henrico County	Dec-13	174,769	166,279	8,490	4.9%
Richmond City	Dec-13	102,329	96,137	6,192	6.1%
Chesterfield County	Dec-13	177,264	168,662	8,602	4.9%
Goochland County	Dec-13	11,329	10,895	434	3.8%
Hanover County	Dec-13	54,965	52,519	2,446	4.5%

Area	Period	Civilian Labor Force	Employment	Unemployment	Rate
------	--------	----------------------	------------	--------------	------

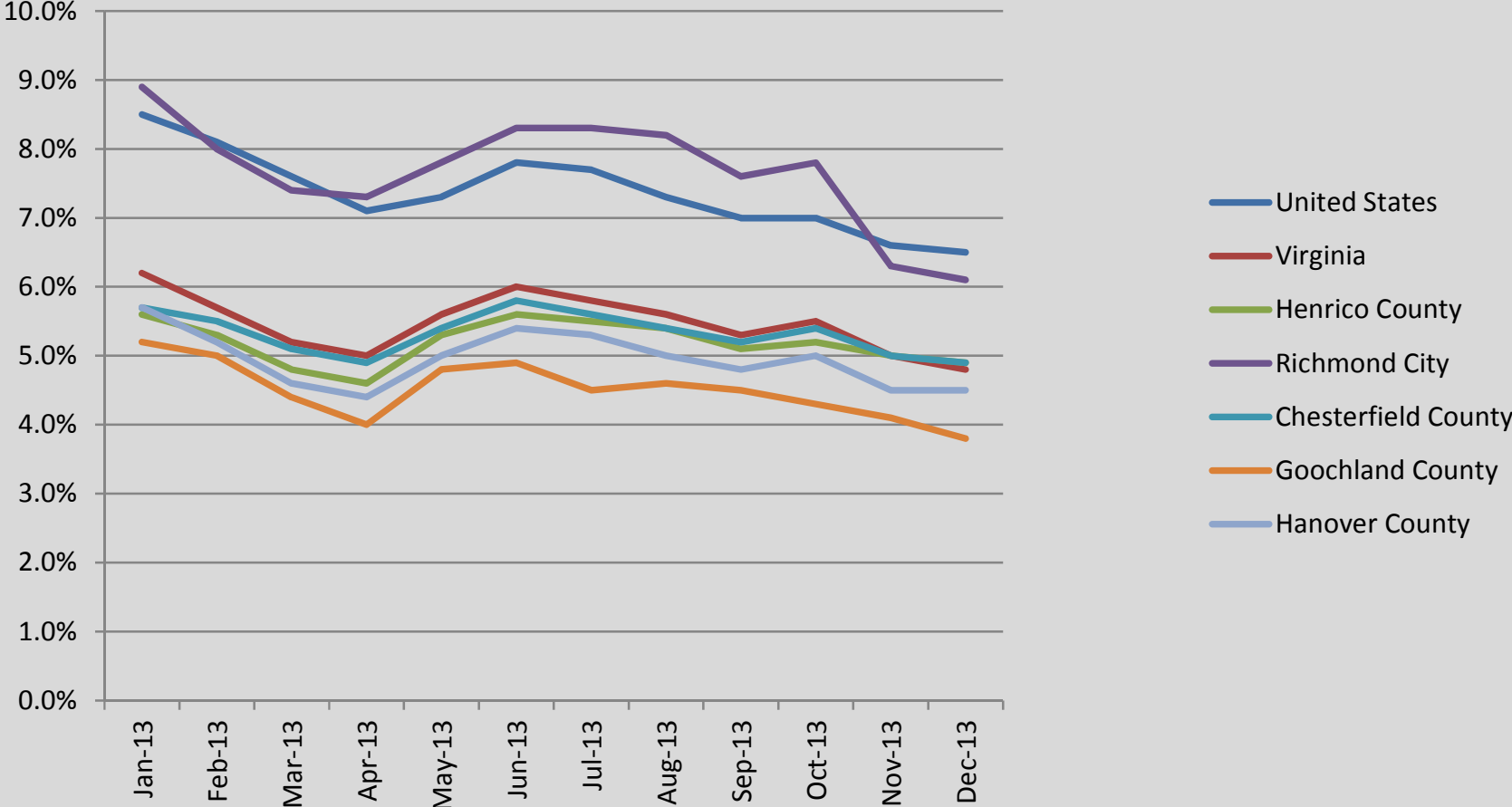
Average 2013

United States	2013	155,389,167	143,929,333	11,459,833	7.4%
Virginia	2013	4,227,955	3,996,464	231,491	5.5%
Henrico County	2013	173,406	164,411	8,995	5.2%
Richmond City	2013	102,187	94,361	7,825	7.7%
Chesterfield County	2013	176,616	167,227	9,389	5.3%
Goochland County	2013	11,674	11,147	527	4.5%
Hanover County	2013	55,142	52,417	2,726	4.9%

Average Unemployment Rate: 2013



Unemployment Rate: 2013



*Note: These numbers do not reflect adjustments made by VEC in subsequent years

Area	Period	Civilian Labor Force	Employment	Unemployment	Rate
2012					
United States	Jan-12	153,485,000	139,944,000	13,541,000	8.8%
Virginia	Jan-12	4,295,930	4,036,397	259,533	6.0%
Henrico County	Jan-12	174,912	164,829	10,083	5.8%
Richmond City	Jan-12	103,816	94,929	8,887	8.6%
Chesterfield County	Jan-12	177,778	167,528	10,250	5.8%
Goochland County	Jan-12	11,937	11,290	647	5.4%
Hanover County	Jan-12	56,094	53,001	3,093	5.5%
United States	Feb-12	154,114,000	140,684,000	13,430,000	8.7%
Virginia	Feb-12	4,322,195	4,057,322	264,873	6.1%
Henrico County	Feb-12	175,638	165,448	10,190	5.8%
Richmond City	Feb-12	104,103	95,286	8,817	8.5%
Chesterfield County	Feb-12	178,713	168,157	10,556	5.8%
Goochland County	Feb-12	11,993	11,332	661	5.4%
Hanover County	Feb-12	56,439	53,200	3,239	5.7%
United States	Mar-12	154,316,000	141,412,000	12,904,000	8.4%
Virginia	Mar-12	4,328,420	4,080,943	247,477	5.7%
Henrico County	Mar-12	176,032	166,307	9,725	5.5%
Richmond City	Mar-12	104,157	95,781	8,376	8.0%
Chesterfield County	Mar-12	179,042	169,030	10,012	5.6%
Goochland County	Mar-12	12,017	11,391	626	5.2%
Hanover County	Mar-12	56,508	53,476	3,032	5.4%
United States	Apr-12	153,905,000	141,995,000	11,910,000	7.7%
Virginia	Apr-12	4,319,525	4,086,896	232,629	5.4%
Henrico County	Apr-12	175,361	165,996	9,365	5.3%
Richmond City	Apr-12	103,929	95,601	8,328	8.0%
Chesterfield County	Apr-12	178,133	168,713	9,420	5.3%
Goochland County	Apr-12	11,890	11,370	520	4.4%
Hanover County	Apr-12	56,189	53,376	2,813	5.0%

Area	Period	Civilian Labor Force	Employment	Unemployment	Rate
United States	May-12	154,998,000	142,727,000	12,271,000	7.9%
Virginia	May-12	4,345,319	4,104,658	240,661	5.5%
Henrico County	May-12	174,942	165,555	9,387	5.4%
Richmond City	May-12	104,008	95,347	8,661	8.3%
Chesterfield County	May-12	178,076	168,266	9,810	5.5%
Goochland County	May-12	11,858	11,340	518	4.4%
Hanover County	May-12	56,162	53,235	2,927	5.2%
United States	Jun-12	156,385,000	143,202,000	13,184,000	8.4%
Virginia	Jun-12	4,377,908	4,115,140	262,768	6.0%
Henrico County	Jun-12	176,849	166,642	10,207	5.8%
Richmond City	Jun-12	105,434	95,973	9,461	9.0%
Chesterfield County	Jun-12	179,924	169,371	10,553	5.9%
Goochland County	Jun-12	11,996	11,414	582	4.9%
Hanover County	Jun-12	56,823	53,584	3,239	5.7%
United States	Jul-12	156,526,000	143,126,000	13,400,000	8.6%
Virginia	Jul-12	4,383,653	4,119,372	264,281	6.0%
Henrico County	Jul-12	176,653	166,452	10,201	5.8%
Richmond City	Jul-12	105,859	95,864	9,995	9.4%
Chesterfield County	Jul-12	179,815	169,177	10,638	5.9%
Goochland County	Jul-12	11,960	11,401	559	4.7%
Hanover County	Jul-12	56,660	53,523	3,137	5.5%
United States	Aug-12	155,255,000	142,558,000	12,696,000	8.2%
Virginia	Aug-12	4,333,724	4,083,601	250,123	5.8%
Henrico County	Aug-12	175,506	165,714	9,792	5.6%
Richmond City	Aug-12	104,942	95,439	9,503	9.1%
Chesterfield County	Aug-12	178,337	168,427	9,910	5.6%
Goochland County	Aug-12	11,853	11,350	503	4.2%
Hanover County	Aug-12	56,313	53,286	3,027	5.4%

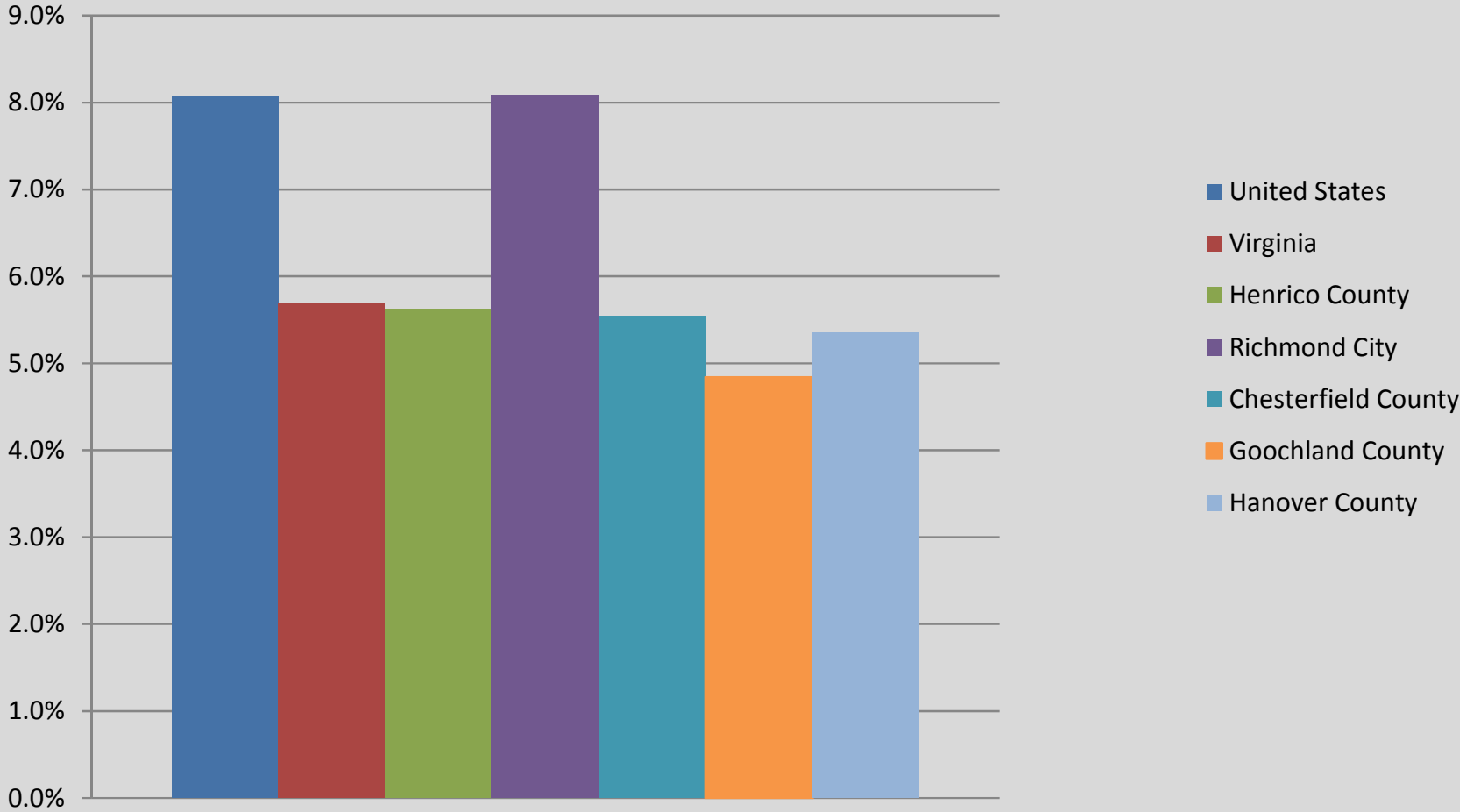
Area	Period	Civilian Labor Force	Employment	Unemployment	Rate
United States	Sep-12	155,075,000	143,333,000	11,742,000	7.6%
Virginia	Sep-12	4,339,364	4,096,079	243,285	5.6%
Henrico County	Sep-12	174,765	165,114	9,651	5.5%
Richmond City	Sep-12	104,036	95,093	8,943	8.6%
Chesterfield County	Sep-12	177,534	167,817	9,717	5.5%
Goochland County	Sep-12	11,862	11,309	553	4.7%
Hanover County	Sep-12	56,066	53,093	2,973	5.3%
United States	Oct-12	155,779,000	144,039,000	11,741,000	7.5%
Virginia	Oct-12	4,359,178	4,124,894	234,284	5.4%
Henrico County	Oct-12	175,297	166,122	9,175	5.2%
Richmond City	Oct-12	104,312	95,674	8,638	8.3%
Chesterfield County	Oct-12	178,206	168,842	9,364	5.3%
Goochland County	Oct-12	11,892	11,378	514	4.3%
Hanover County	Oct-12	56,312	53,417	2,895	5.1%
United States	Nov-12	154,953,000	143,549,000	11,404,000	7.4%
Virginia	Nov-12	4,332,173	4,104,015	228,158	5.3%
Henrico County	Nov-12	173,954	165,077	8,877	5.1%
Richmond City	Nov-12	103,441	95,072	8,369	8.1%
Chesterfield County	Nov-12	176,919	167,780	9,139	5.2%
Goochland County	Nov-12	11,826	11,307	519	4.4%
Hanover County	Nov-12	55,942	53,081	2,861	5.1%
United States	Dec-12	154,904,000	143,060,000	11,844,000	7.6%
Virginia	Dec-12	4,316,565	4,084,580	231,985	5.4%
Henrico County	Dec-12	172,770	163,805	8,965	5.2%
Richmond City	Dec-12	102,629	94,340	8,289	8.1%
Chesterfield County	Dec-12	175,782	166,487	9,295	5.3%
Goochland County	Dec-12	11,782	11,220	562	4.8%
Hanover County	Dec-12	55,607	52,672	2,935	5.3%

Area	Period	Civilian Labor Force	Employment	Unemployment	Rate
------	--------	----------------------	------------	--------------	------

Average 2012

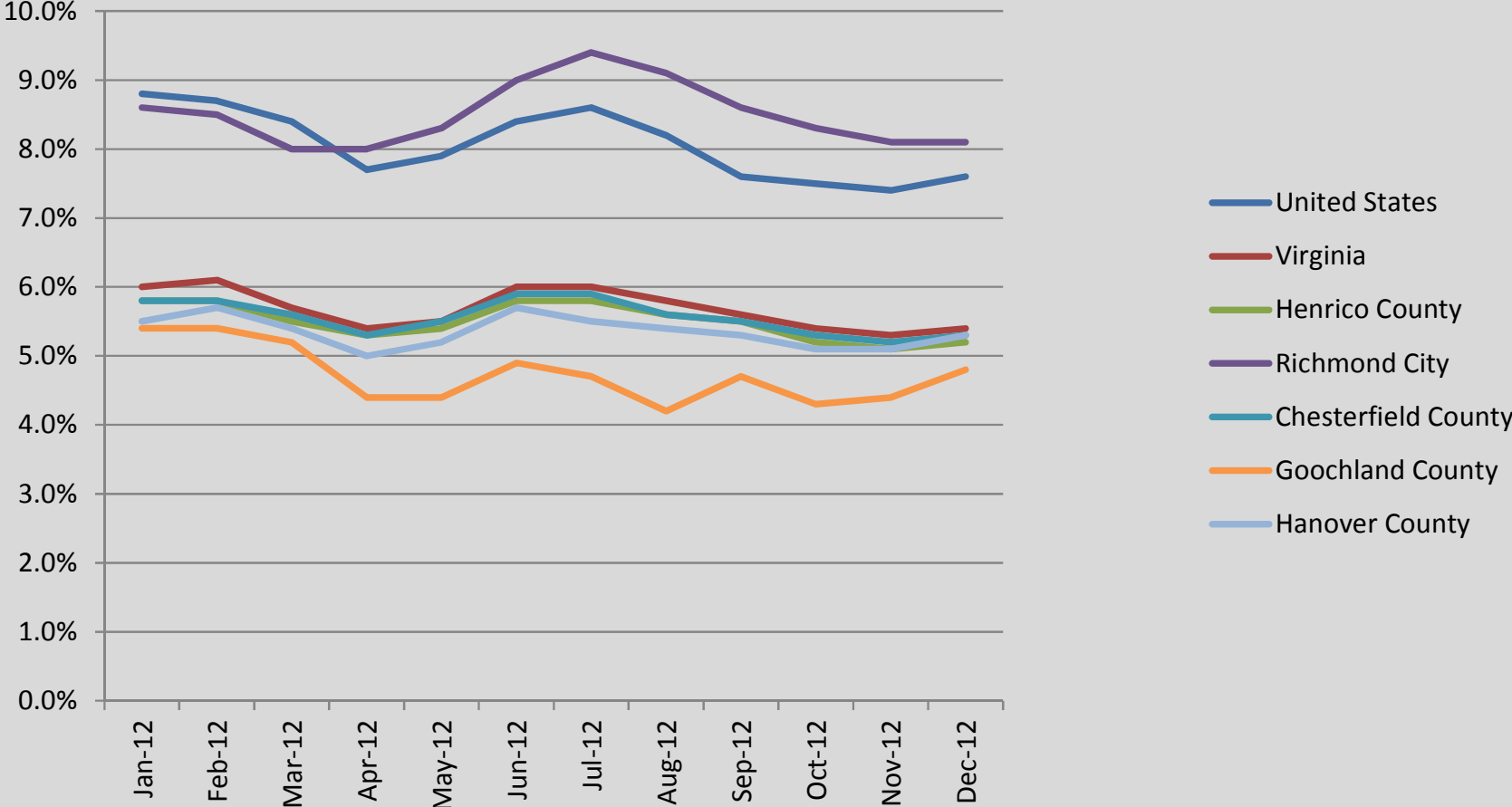
United States	2012	155,335,598	142,811,085	12,524,597	8.1%
Virginia	2012	4,352,326	4,104,915	247,411	5.7%
Henrico County	2012	183,843	173,511	10,332	5.6%
Richmond City	2012	118,965	109,348	9,617	8.1%
Chesterfield County	2012	179,174	169,242	9,932	5.5%
Goochland County	2012	16,567	15,765	802	4.8%
Hanover County	2012	56,260	53,245	3,014	5.4%

Average Unemployment Rate: 2012



*Note: These numbers do not reflect adjustments made by VEC in subsequent years

Unemployment Rate: 2012



*Note: These numbers do not reflect adjustments made by VEC in subsequent years

Area	Period	Civilian Labor Force	Employment	Unemployment	Rate
2011					
United States	Jan-11	152,536,000	137,599,000	14,937,000	9.8%
Virginia	Jan-11	4,159,362	3,872,361	287,001	6.9%
Henrico County	Jan-11	163,702	152,500	11,202	6.8%
Richmond City	Jan-11	101,039	91,092	9,947	9.8%
Chesterfield County	Jan-11	167,038	155,665	11,373	6.8%
Goochland County	Jan-11	11,285	10,606	679	6.0%
Hanover County	Jan-11	54,358	50,835	3,523	6.5%
United States	Feb-11	152,635,000	138,093,000	14,542,000	9.5%
Virginia	Feb-11	4,164,125	3,890,066	274,059	6.6%
Henrico County	Feb-11	164,107	153,327	10,780	6.6%
Richmond City	Feb-11	100,964	91,586	9,378	9.3%
Chesterfield County	Feb-11	167,537	156,509	11,028	6.6%
Goochland County	Feb-11	11,334	10,664	670	5.9%
Hanover County	Feb-11	54,419	51,110	3,309	6.1%
United States	Mar-11	153,022,000	138,962,000	14,060,000	9.2%
Virginia	Mar-11	4,192,994	3,927,566	265,428	6.3%
Henrico County	Mar-11	165,567	155,095	10,472	6.3%
Richmond City	Mar-11	101,759	92,642	9,117	9.0%
Chesterfield County	Mar-11	169,166	158,314	10,852	6.4%
Goochland County	Mar-11	11,436	10,787	649	5.7%
Hanover County	Mar-11	54,923	51,700	3,223	5.9%
United States	Apr-11	152,898,000	139,661,000	13,237,000	8.7%
Virginia	Apr-11	4,189,342	3,946,151	243,191	5.8%
Henrico County	Apr-11	164,026	154,432	9,594	5.8%
Richmond City	Apr-11	100,770	92,246	8,524	8.5%
Chesterfield County	Apr-11	167,722	157,637	10,085	6.0%
Goochland County	Apr-11	11,329	10,741	588	5.2%
Hanover County	Apr-11	54,430	51,479	2,951	5.4%

Area	Period	Civilian Labor Force	Employment	Unemployment	Rate
United States	May-11	153,449,000	140,028,000	13,421,000	8.7%
Virginia	May-11	4,216,219	3,966,075	251,144	6.0%
Henrico County	May-11	164,706	154,878	9,828	6.0%
Richmond City	May-11	101,121	92,513	8,608	8.5%
Chesterfield County	May-11	168,387	158,092	10,295	6.1%
Goochland County	May-11	11,378	10,772	606	5.3%
Hanover County	May-11	54,766	51,627	3,139	5.7%
United States	Jun-11	154,538,000	140,129,000	14,409,000	9.3%
Virginia	Jun-11	4,234,415	3,966,861	267,554	6.3%
Henrico County	Jun-11	165,465	155,106	10,359	6.3%
Richmond City	Jun-11	102,234	92,649	9,585	9.4%
Chesterfield County	Jun-11	168,899	158,325	10,574	6.3%
Goochland County	Jun-11	11,407	10,787	620	5.4%
Hanover County	Jun-11	55,008	51,703	3,305	6.0%
United States	Jul-11	154,812,000	140,384,000	14,428,000	9.3%
Virginia	Jul-11	4,259,499	3,995,943	263,556	6.2%
Henrico County	Jul-11	166,376	156,269	10,107	6.1%
Richmond City	Jul-11	103,062	93,343	9,719	9.4%
Chesterfield County	Jul-11	169,924	159,512	10,412	6.1%
Goochland County	Jul-11	11,499	10,868	631	5.5%
Hanover County	Jul-11	55,254	52,091	3,163	5.7%
United States	Aug-11	154,344,000	140,335,000	14,008,000	9.1%
Virginia	Aug-11	4,243,140	3,966,790	276,350	6.5%
Henrico County	Aug-11	165,922	155,209	10,713	6.5%
Richmond City	Aug-11	102,919	92,710	10,209	9.9%
Chesterfield County	Aug-11	169,361	158,430	10,931	6.5%
Goochland County	Aug-11	11,434	10,795	639	5.6%
Hanover County	Aug-11	55,068	51,738	3,330	6.0%

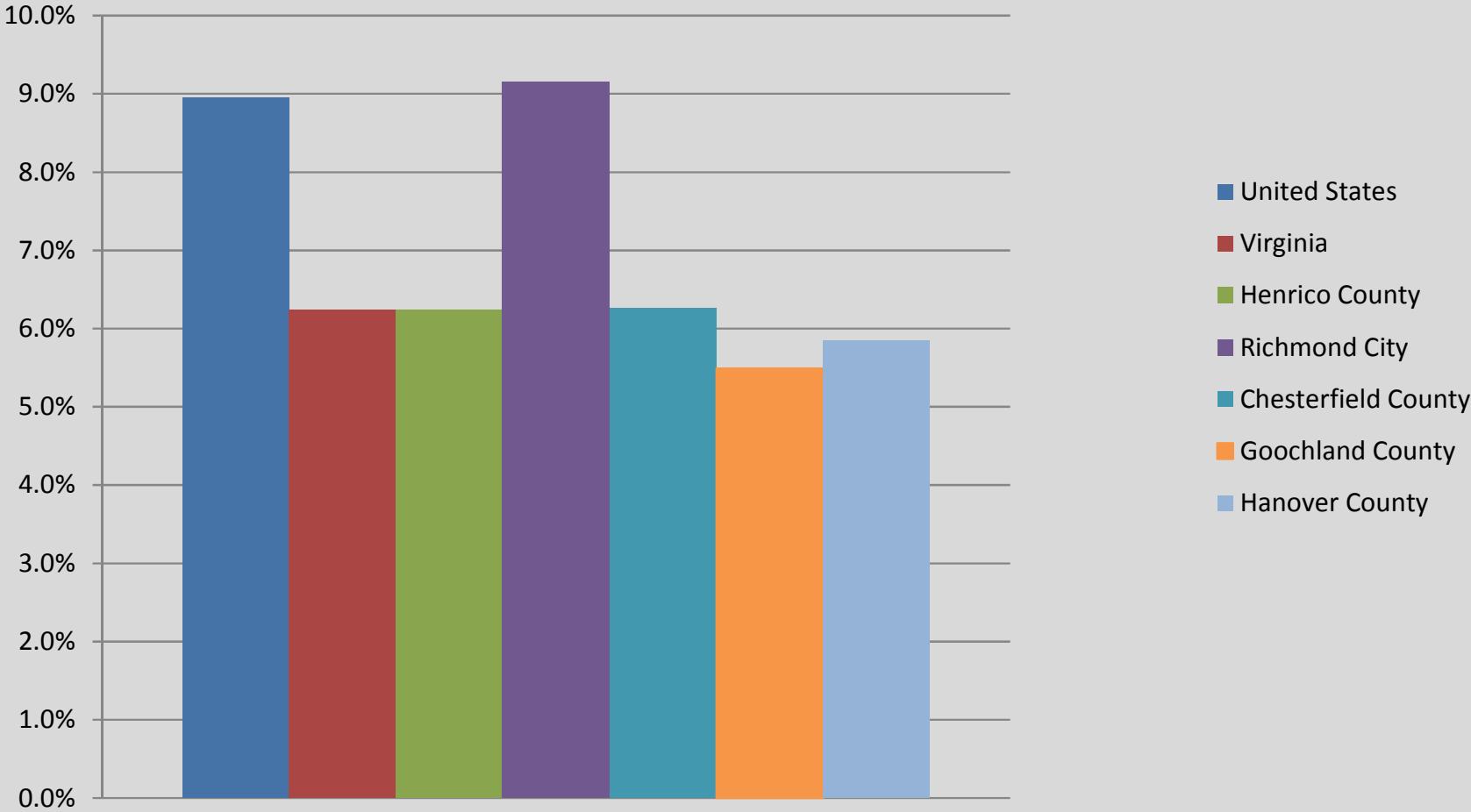
Area	Period	Civilian Labor Force	Employment	Unemployment	Rate
United States	Sep-11	154,022,000	140,502,000	13,520,000	8.8%
Virginia	Sep-11	4,242,178	3,969,914	272,264	6.4%
Henrico County	Sep-11	165,872	155,015	10,857	6.5%
Richmond City	Sep-11	102,343	92,594	9,749	9.5%
Chesterfield County	Sep-11	169,146	158,232	10,914	6.5%
Goochland County	Sep-11	11,391	10,781	610	5.4%
Hanover County	Sep-11	54,990	51,673	3,317	6.0%
United States	Oct-11	154,088,000	140,987,000	13,102,000	8.5%
Virginia	Oct-11	4,242,461	3,986,617	255,844	6.0%
Henrico County	Oct-11	165,789	155,611	10,178	6.1%
Richmond City	Oct-11	102,208	92,950	9,258	9.1%
Chesterfield County	Oct-11	169,088	158,841	10,247	6.1%
Goochland County	Oct-11	11,418	10,823	595	5.2%
Hanover County	Oct-11	55,003	51,872	3,131	5.7%
United States	Nov-11	153,683,000	141,070,000	12,613,000	8.2%
Virginia	Nov-11	4,230,805	3,988,034	242,771	5.7%
Henrico County	Nov-11	164,501	154,869	9,632	5.9%
Richmond City	Nov-11	101,206	92,508	8,698	8.6%
Chesterfield County	Nov-11	167,792	158,084	9,708	5.8%
Goochland County	Nov-11	11,355	10,771	584	5.1%
Hanover County	Nov-11	54,599	51,624	2,975	5.4%
United States	Dec-11	153,373,000	140,681,000	12,692,000	8.3%
Virginia	Dec-11	4,231,916	3,974,883	257,033	6.1%
Henrico County	Dec-11	166,025	156,067	9,958	6.0%
Richmond City	Dec-11	102,291	93,223	9,068	8.9%
Chesterfield County	Dec-11	169,544	159,305	10,239	6.0%
Goochland County	Dec-11	11,491	10,854	637	5.5%
Hanover County	Dec-11	55,120	52,023	3,097	5.6%

Area	Period	Civilian Labor Force	Employment	Unemployment	Rate
------	--------	----------------------	------------	--------------	------

Average 2011

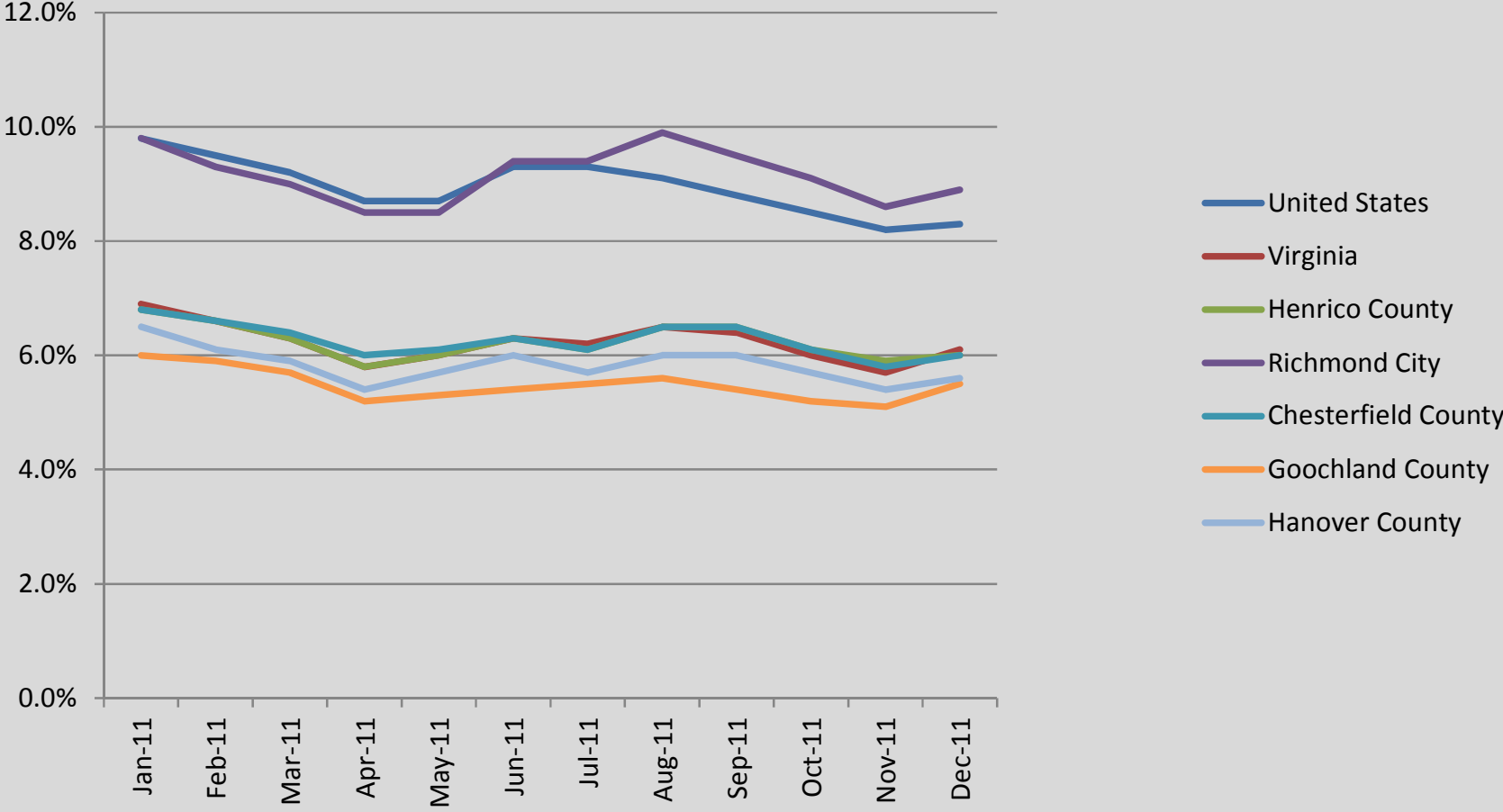
United States	2011	153,616,667	139,869,250	13,747,417	8.9%
Virginia	2011	4,217,205	3,954,272	263,016	6.2%
Henrico County	2011	165,172	154,865	10,307	6.2%
Richmond City	2011	101,826	92,505	9,322	9.2%
Chesterfield County	2011	168,634	158,079	10,555	6.3%
Goochland County	2011	11,396	10,771	626	5.5%
Hanover County	2011	54,828	51,623	3,205	5.8%

Average Unemployment Rate: 2011



*Note: These numbers do not reflect adjustments made by VEC in subsequent years

Unemployment Rate: 2011



*Note: These numbers do not reflect adjustments made by VEC in subsequent years