



COUNTY OF HENRICO, VIRGINIA

MONUMENT DESCRIPTION



NAME OF STATION: WWA29 **SET** OCTOBER 2001

NO VERTICAL CONTROL DATA

NOTE: Geodetic and metric coordinates were calculated by Corpcon from State Plane coordinates provided by Henrico County Dept. of Public Works. Timmons Group did no field work in establishing these coordinates.

HORIZONTAL CONTROL

Horizontal Control Based On NAD 83 (93):

VA STATE PLANE COORDINATES (SOUTH ZONE):

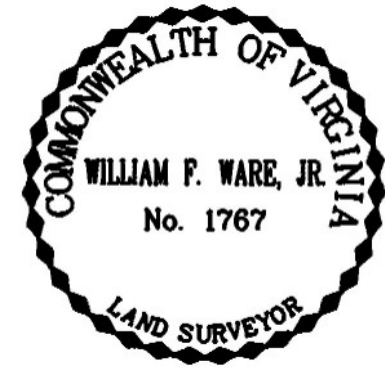
NORTHING (FEET): 3767216.40 NORTHING (METERS): 1148249.855
 EASTING (FEET): 11730330.30 EASTING (METERS): 3575411.827

GEOGRAPHIC COORDINATE SYSTEM:

LATITUDE (Y): 37° 39' 58.05323"
 LONGITUDE (X): 77° 38' 42.81561"

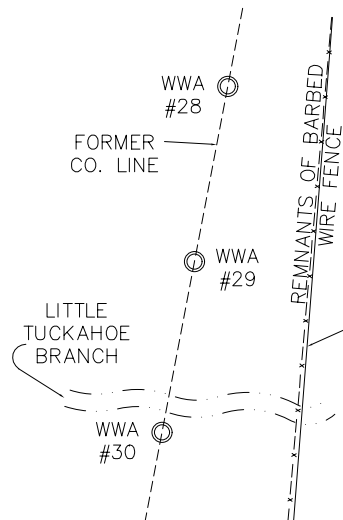
MONUMENT DESCRIPTION :

Station is a 3 1/4" Aluminum Disk set in place on a 1" rebar 0.2' above ground. Station is set on the former County line approximately 774' South of I-64.



VICINITY MAP

WWA NO. 29



DETAIL MONUMENT

WWA NO. 29

