



COUNTY OF HENRICO, VIRGINIA

MONUMENT DESCRIPTION



NAME OF STATION: WWA26 **SET** OCTOBER 2001

NO VERTICAL CONTROL DATA

NOTE: Geodetic and metric coordinates were calculated by Corpcon from State Plane coordinates provided by Henrico County Dept. of Public Works. Timmons Group did no field work in establishing these coordinates.

HORIZONTAL CONTROL

Horizontal Control Based On NAD 83 (93):

VA STATE PLANE COORDINATES (SOUTH ZONE):

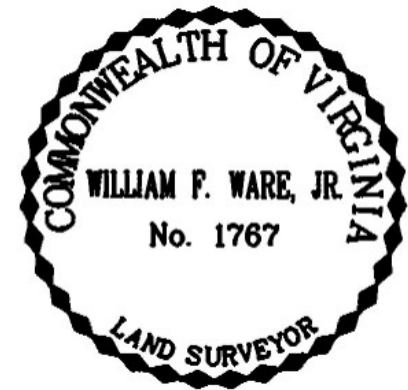
NORTHING (FEET): 3768661.05 NORTHING (METERS): 1148690.186
EASTING (FEET): 11730734.04 EASTING (METERS): 3575534.887

GEOGRAPHIC COORDINATE SYSTEM:

LATITUDE (Y): 37° 40' 12.29929"
LONGITUDE (X): 77° 38' 37.63144"

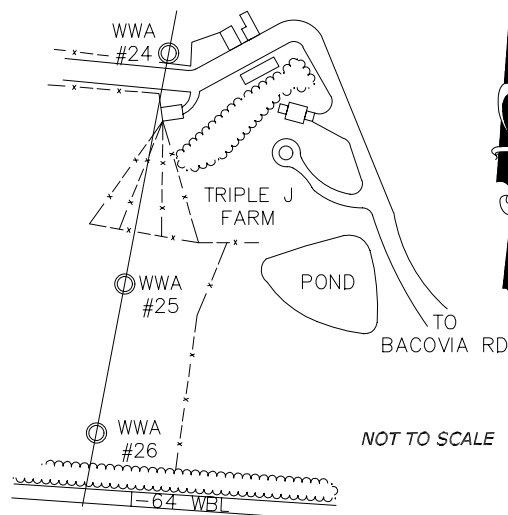
MONUMENT DESCRIPTION :

Station is a 3 1/4" Aluminum Disk set in place on a 1" rebar flush with the ground. Station is set on the County line approximately 126' North of I-64 in a field.



VICINITY MAP

WWA NO. 26



DETAIL MONUMENT

WWA NO. 26

