



# COUNTY OF HENRICO, VIRGINIA

## MONUMENT DESCRIPTION



**NAME OF STATION:** WWA25      **SET** OCTOBER 2001

### NO VERTICAL CONTROL DATA

NOTE: Geodetic and metric coordinates were calculated by Corpcon from State Plane coordinates provided by Henrico County Dept. of Public Works. Timmons Group did no field work in establishing these coordinates.

### HORIZONTAL CONTROL

Horizontal Control Based On NAD 83 (93):

### VA STATE PLANE COORDINATES (SOUTH ZONE):

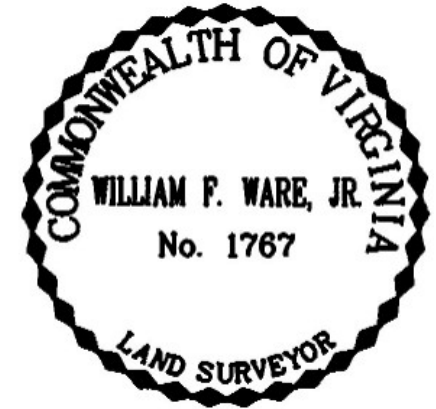
NORTHING (FEET): 3769142.59      NORTHING (METERS): 1148836.959  
EASTING (FEET): 11730868.63      EASTING (METERS): 3575575.910

### GEOGRAPHIC COORDINATE SYSTEM:

LATITUDE (Y): 37° 40' 17.04786"  
LONGITUDE (X): 77° 38' 35.90315"

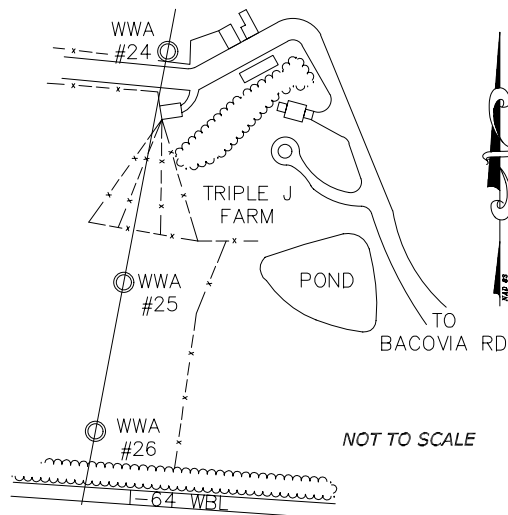
### MONUMENT DESCRIPTION :

Station is a 3 1/4" Aluminum Disk set in place on a 1" rebar flush with the ground. Station is set on the County line approximately 626' North of I-64 in a field.



### VICINITY MAP

WWA NO. 25



### DETAIL MONUMENT

WWA NO. 25

