



COUNTY OF HENRICO, VIRGINIA

MONUMENT DESCRIPTION



NAME OF STATION: **181** SET MAY 2004

NO VERTICAL CONTROL ESTABLISHED

HORIZONTAL CONTROL

Horizontal Control Based On NAD 83 (93):

VA STATE PLANE COORDINATES (SOUTH ZONE):

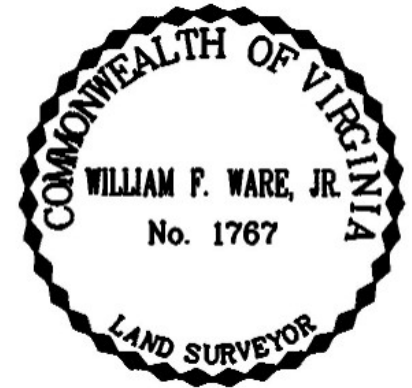
NORTHING (FEET): 3763276.420 NORTHING (METERS): 1147048.947
EASTING (FEET): 11729238.710 EASTING (METERS): 3575079.109

GEOGRAPHIC COORDINATE SYSTEM:

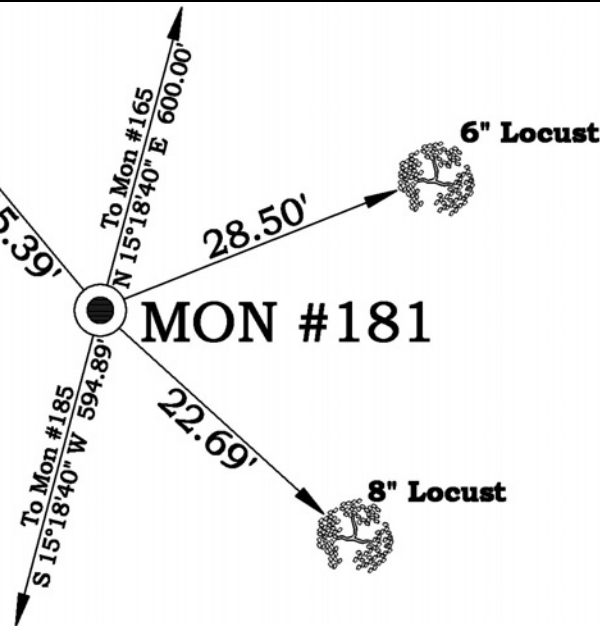
LATITUDE (Y): 37 39 19.19883
LONGITUDE (X): 77 38 56.83308

MONUMENT DESCRIPTION :

1" Rebar with 3.25" Aluminum Disk Set to establish the proposed change in the County Line w/ Henrico and Goochland. See plat prepared by Timmons Group dated 5-7-03, last revised 3-12-04 entitled "Plat Showing the Proposed Relocated County Boundary Line by Voluntary Agreement Between Goochland County and Henrico County". Station was located by traditional survey techniques. Monument is set on the proposed county line.



8" Locust



NOT TO SCALE

