



COUNTY OF HENRICO, VIRGINIA

MONUMENT DESCRIPTION



NAME OF STATION: **144** **SET AUGUST 1999**

VERTICAL CONTROL

NAVD 88 (Feet): ELEV. = 252.4
NAVD 88 (Meters): ELEV. = 76.93

HORIZONTAL CONTROL

Horizontal Control Based On NAD 83 (93):

VA STATE PLANE COORDINATES (SOUTH ZONE):

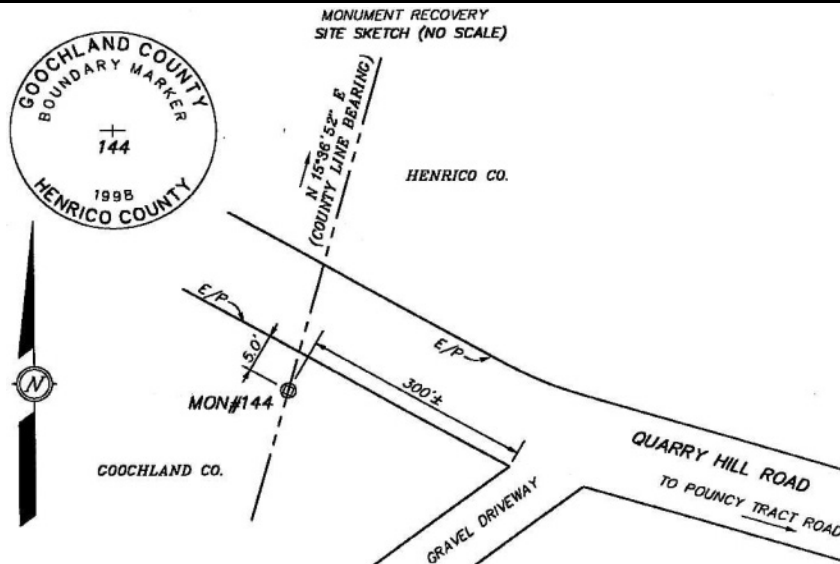
NORTHING (FEET): 3777699.98 NORTHING (METERS): 1151445.26
EASTING (FEET): 11733260.22 EASTING (METERS): 3576304.87

GEOGRAPHIC COORDINATE SYSTEM:

LATITUDE (Y): 37 41 41.4327
LONGITUDE (X): 77 38 05.1820

MONUMENT DESCRIPTION:

36" concrete monument with 3.25" bronze cap. Stamped 144 1998. Located on the South side of Quarry Hill Road. The monument is set on the county line between Henrico and Goochland, 5.0 ± South of the edge of pavement of Quarry Hill Road and 300' NW of the edge of the gravel driveway. The county line between Henrico and Goochland is on a bearing of N 15° 36' 52" E (grid). Mon was set by the Henrico Department of Public Works on 8-6-99 by traditional survey techniques. The County Surveyor in charge of this work was David Holland, LS. Control used to establish this monument = Mon #133 & Mon #134.



July, 2004 Monument Not Found