



COUNTY OF HENRICO, VIRGINIA

MONUMENT DESCRIPTION



NAME OF STATION:

115

SET MAY 1998

VERTICAL CONTROL

NAVD 88 (Feet): ELEV. = 233.9
NAVD 88 (Meters): ELEV. = 71.29

HORIZONTAL CONTROL

Horizontal Control Based On NAD 83 (93):

VA STATE PLANE COORDINATES (SOUTH ZONE):

NORTHING (FEET): 3753662.490 NORTHING (METERS): 1144118.615
EASTING (FEET): 11750878.235 EASTING (METERS): 3581674.850

GEOGRAPHIC COORDINATE SYSTEM:

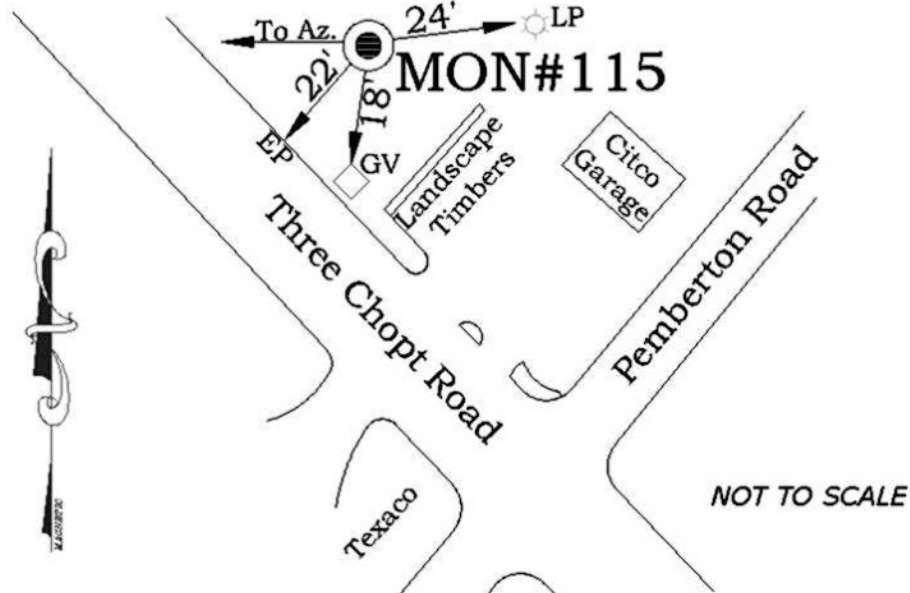
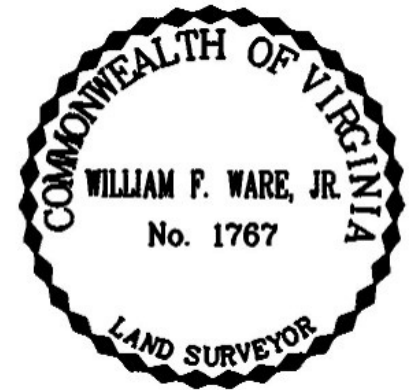
LATITUDE (Y): 37 37 42.13970
LONGITUDE (X): 77 34 28.92054

MONUMENT DESCRIPTION :

Station is a 2" Bronze Disk set in place in a 6" concrete monument.

From the intersection of Pemberton Road and Three Chopt Road, proceed 175 feet west on Three Chopt Road to the station on the right in the grass. Station is set flush with the ground.

Azimuth Mark Monument #115A





COUNTY OF HENRICO, VIRGINIA

MONUMENT DESCRIPTION



NAME OF STATION:

115A

SET JUNE 2000

VERTICAL CONTROL

NAVD 88 (Feet): ELEV. = 219.0
 NAVD 88 (Meters): ELEV. = 66.75

HORIZONTAL CONTROL

Horizontal Control Based On NAD 83 (93):

VA STATE PLANE COORDINATES (SOUTH ZONE):

NORTHING (FEET): 3754142.911 NORTHING (METERS): 1144265.048
 EASTING (FEET): 11750265.966 EASTING (METERS): 3581488.230

GEOGRAPHIC COORDINATE SYSTEM:

LATITUDE (Y): 37 37 46.94856
 LONGITUDE (X): 77 34 36.47288

MONUMENT DESCRIPTION :

Station is a 2" Bronze Disk set in place in a 6" concrete monument.

From the intersection of Three Chopt Road and Gaskins Road, proceed southeast 0.1 mile along Three Chopt Road to the station on the right in the grass. Station is set flush with the ground.

