



COUNTY OF HENRICO, VIRGINIA

MONUMENT DESCRIPTION



NAME OF STATION: **86** SET MAY 1998

VERTICAL CONTROL

NAVD 88 (Feet): ELEV. = 196.1
NAVD 88 (Meters): ELEV. = 59.77

HORIZONTAL CONTROL

Horizontal Control Based On NAD 83 (93):

VA STATE PLANE COORDINATES (SOUTH ZONE):

NORTHING (FEET): 3738525.034 NORTHING (METERS): 1139504.709
EASTING (FEET): 11794610.425 EASTING (METERS): 3595004.448

GEOGRAPHIC COORDINATE SYSTEM:

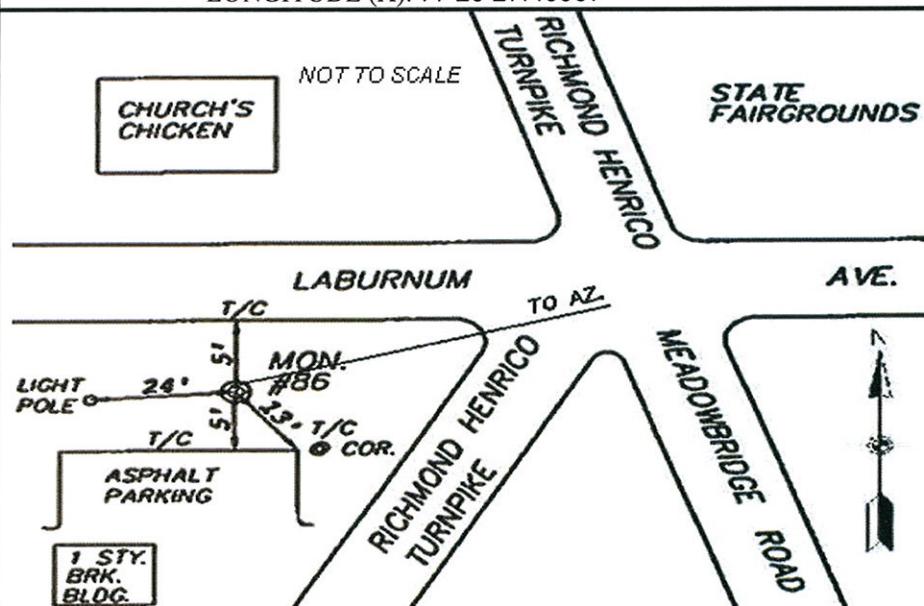
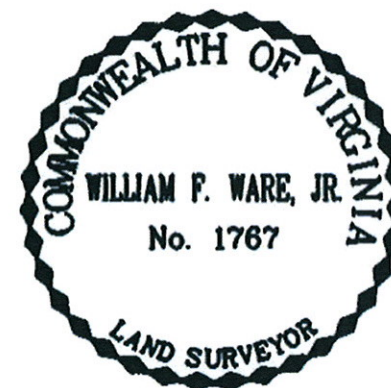
LATITUDE (Y): 37 35 7.90396
LONGITUDE (X): 77 25 27.46557

MONUMENT DESCRIPTION :

Station is a 2" Bronze Disk set in place in a 6" concrete monument.

From the intersection of Laburnum Avenue and Richmond/Henrico Turnpike, proceed 61 feet west on Laburnum Avenue to the station on the left in the grass. Station is set 0.1 foot below the ground.

Azimuth Mark Monument #86AR





COUNTY OF HENRICO, VIRGINIA

MONUMENT DESCRIPTION



NAME OF STATION: 86AR

RESET SEPTEMBER 2008

VERTICAL CONTROL

NAVD 88 (Feet): ELEV. = 196.8

NAVD 88 (Meters): ELEV. = 59.99

HORIZONTAL CONTROL

Horizontal Control Based On NAD 83 (93):

VA STATE PLANE COORDINATES (SOUTH ZONE):

NORTHING (FEET): 3738579.593 NORTHING (METERS): 1139521.339

EASTING (FEET): 11795585.699 EASTING (METERS): 3595301.712

GEOGRAPHIC COORDINATE SYSTEM:

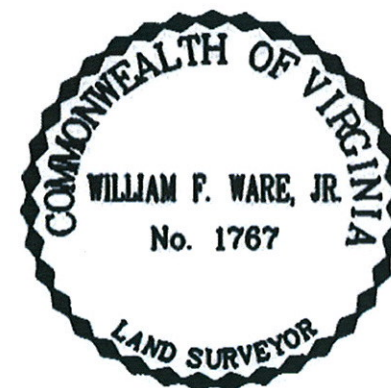
LATITUDE (Y): 37 35 8.33331

LONGITUDE (X): 77 25 15.34192

MONUMENT DESCRIPTION :

Station is a 2" Bronze Disk set in place in a 6" concrete monument.

To reach the station from the intersection of Richmond/Henrico Turnpike and Laburnum Avenue, proceed east 0.14 mile along Laburnum Avenue to the station on the left in the grass. Station is set flush with the ground.



NOT TO SCALE

