



COUNTY OF HENRICO, VIRGINIA

MONUMENT DESCRIPTION



NAME OF STATION:

84

SET MAY 1998

VERTICAL CONTROL

NAVD 88 (Feet): ELEV. = 161.8
 NAVD 88 (Meters): ELEV. = 49.32

HORIZONTAL CONTROL

Horizontal Control Based On NAD 83 (93):

VA STATE PLANE COORDINATES (SOUTH ZONE):

NORTHING (FEET): 3729284.586 NORTHING (METERS): 1136688.215
 EASTING (FEET): 11799518.445 EASTING (METERS): 3596500.415

GEOGRAPHIC COORDINATE SYSTEM:

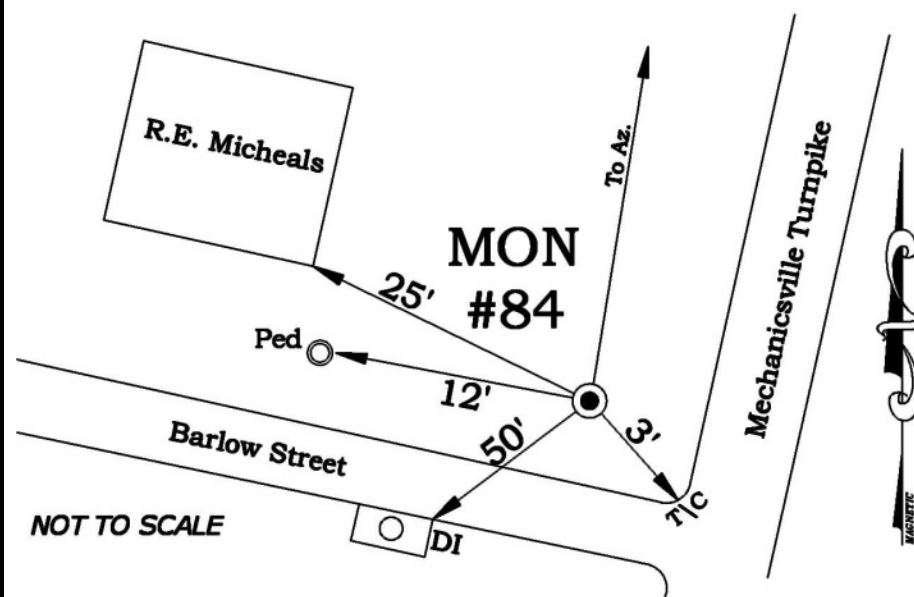
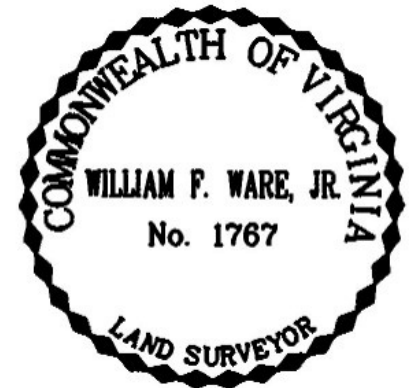
LATITUDE (Y): 37 33 35.99310
 LONGITUDE (X): 77 24 27.82119

MONUMENT DESCRIPTION :

Station is a 2" Bronze Disk set in place in a 6" concrete monument.

To reach the station from the intersection of Interstate 64 and Mechanicsville Turnpike (Route 360), proceed northeast 0.4 mile along Mechanicsville Turnpike to the intersection of Barlow Street. Station is in the northeast corner of the intersection. Station is set 0.1 foot below the ground.

Azimuth Mark Monument #84A





COUNTY OF HENRICO, VIRGINIA

MONUMENT DESCRIPTION



NAME OF STATION:

84A

SET JUNE 2000

VERTICAL CONTROL

NAVD 88 (Feet): ELEV. = 157.1
NAVD 88 (Meters): ELEV. = 47.88

HORIZONTAL CONTROL

Horizontal Control Based On NAD 83 (93):

VA STATE PLANE COORDINATES (SOUTH ZONE):

NORTHING (FEET): 3730000.918 NORTHING (METERS): 1136906.554
EASTING (FEET): 11800002.593 EASTING (METERS): 3596647.984

GEOGRAPHIC COORDINATE SYSTEM:

LATITUDE (Y): 37 33 43.01955
LONGITUDE (X): 77 24 21.70554

MONUMENT DESCRIPTION :

Station is a 2" Bronze Disk set in place in a 6" concrete monument.

To reach the station from the intersection of Interstate 64 and Mechanicsville Turnpike (Route 360), proceed northeast 0.46 mile along Mechanicsville Turnpike to the station on the right in the grass. Station is set flush with the ground.

