



COUNTY OF HENRICO, VIRGINIA

MONUMENT DESCRIPTION



NAME OF STATION: **81R**

RESET SEPTEMBER 2008

VERTICAL CONTROL

NAVD 88 (Feet): ELEV. = 162.0
NAVD 88 (Meters): ELEV. = 49.37

HORIZONTAL CONTROL

Horizontal Control Based On NAD 83 (93):

VA STATE PLANE COORDINATES (SOUTH ZONE):

NORTHING (FEET): 3720590.314 NORTHING (METERS): 1134038.196
EASTING (FEET): 11828573.752 EASTING (METERS): 3605356.490

GEOGRAPHIC COORDINATE SYSTEM:

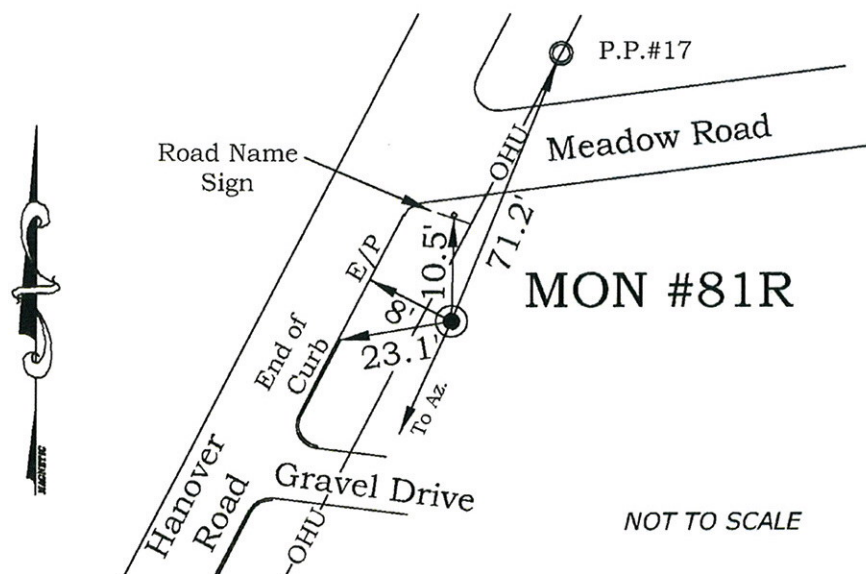
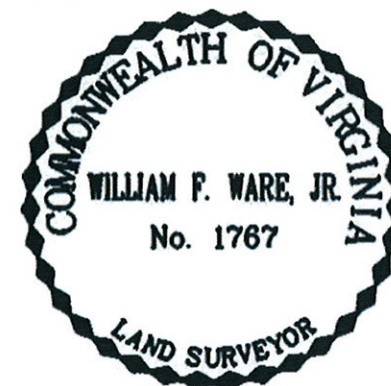
LATITUDE (Y): 37 32 6.56357
LONGITUDE (X): 77 18 28.35597

MONUMENT DESCRIPTION :

Station is a 2" Bronze Disk set in place in a 6" concrete monument.

To reach the station from the intersection of Nine Mile Road and Hanover Road, proceed northeast 0.45 mile along Hanover Road to the station on the right in the grass. Station is set 0.08' above grade.

Azimuth Mark Monument #81A





COUNTY OF HENRICO, VIRGINIA

MONUMENT DESCRIPTION



NAME OF STATION: **81A** SET JUNE 2000

VERTICAL CONTROL

NAVD 88 (Feet): ELEV. = 166.3
NAVD 88 (Meters): ELEV. = 50.69

HORIZONTAL CONTROL

Horizontal Control Based On NAD 83 (93):

VA STATE PLANE COORDINATES (SOUTH ZONE):

NORTHING (FEET): 3719991.722 NORTHING (METERS): 1133855.745
EASTING (FEET): 11828038.899 EASTING (METERS): 3605193.467

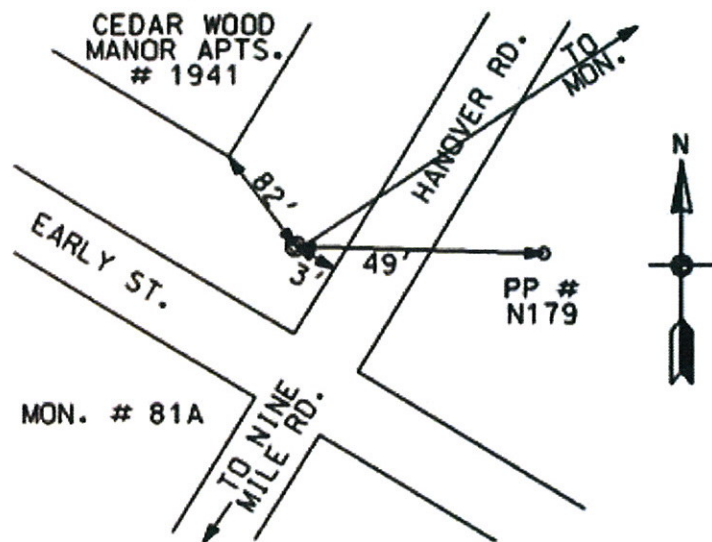
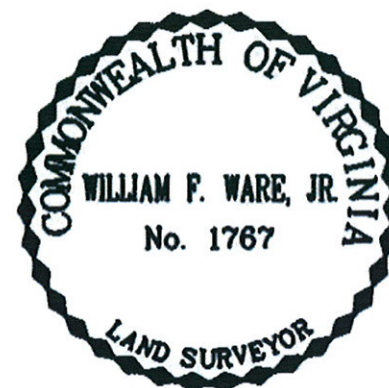
GEOGRAPHIC COORDINATE SYSTEM:

LATITUDE (Y): 37 32 0.71247
LONGITUDE (X): 77 18 35.08965

MONUMENT DESCRIPTION :

Station is a 2" Bronze Disk set in place in a 6" concrete monument.

To reach the station from the intersection of Nine Mile Road and Hanover Road, proceed northeast 0.26 mile along Hanover Road to the station on the left in the grass. Station is set flush with the ground.



NOT TO SCALE

