



# COUNTY OF HENRICO, VIRGINIA

## MONUMENT DESCRIPTION



NAME OF STATION:

37

SET MAY 1998

### VERTICAL CONTROL

NAVD 88 (Feet): ELEV. = 48.2

NAVD 88 (Meters): ELEV. = 14.69

### HORIZONTAL CONTROL

Horizontal Control Based On NAD 83 (93):

### VA STATE PLANE COORDINATES (SOUTH ZONE):

NORTHING (FEET): 3671001.360 NORTHING (METERS): 1118923.452

EASTING (FEET): 11844316.132 EASTING (METERS): 3610154.778

### GEOGRAPHIC COORDINATE SYSTEM:

LATITUDE (Y): 37 23 54.30219

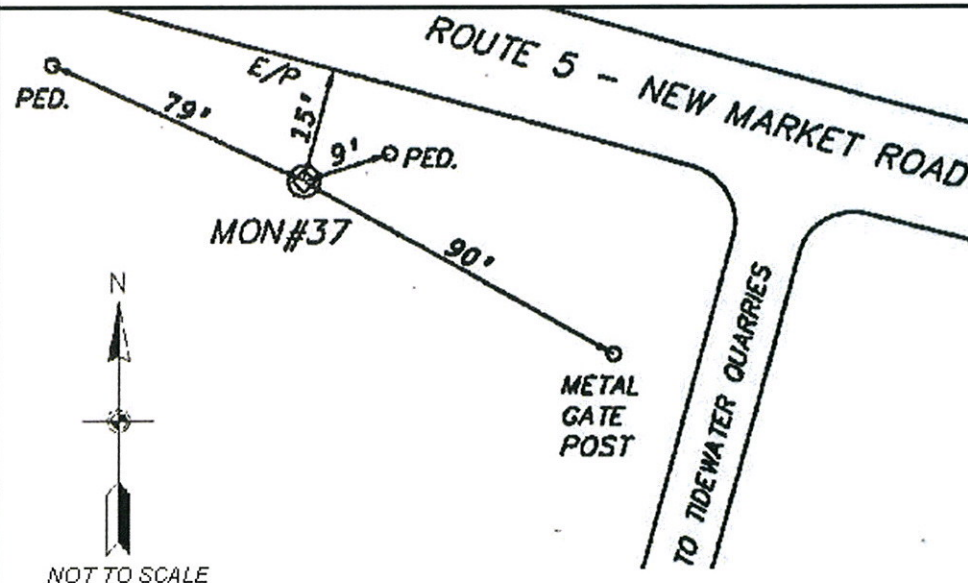
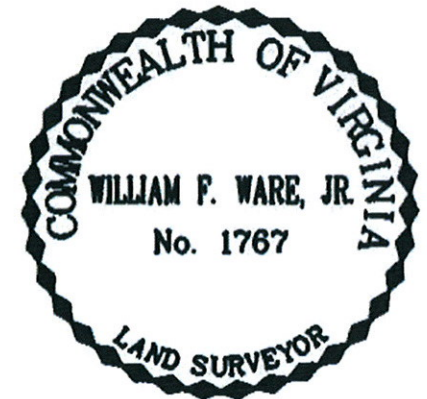
LONGITUDE (X): 77 15 21.03614

### MONUMENT DESCRIPTION :

Station is a 2" Bronze Disk set in place in a 6" concrete monument

To reach the station from the intersection of New Market Road and Willis Church Road, proceed east 0.8 mile along New Market Road, to the station on the right in the grass. Station is set flush with ground.

Azimuth Mark is 37A







## COUNTY OF HENRICO, VIRGINIA

### MONUMENT DESCRIPTION



NAME OF STATION:

**37A**

SET JULY 2004

#### VERTICAL CONTROL

NAVD 88 (Feet): ELEV. = 48.1  
NAVD 88 (Meters): ELEV. = 14.66

#### HORIZONTAL CONTROL

Horizontal Control Based On NAD 83 (93):

#### VA STATE PLANE COORDINATES (SOUTH ZONE):

NORTHING (FEET): 3673577.193    NORTHING (METERS): 1119708.568  
EASTING (FEET): 11841557.790    EASTING (METERS): 3609314.033

#### GEOGRAPHIC COORDINATE SYSTEM:

LATITUDE (Y): 37 24 20.12604  
LONGITUDE (X): 77 15 54.79990

#### MONUMENT DESCRIPTION :

Station is a 2" Bronze Disk set in place in a 6" concrete monument.

To reach the station from the intersection of Interstate 295 and Route 5, go east on Route 5 for 4.5 miles to the intersection of Route 5 and Willis Church Road. Station is on left side of road. New photo September, 2008.

Monument is 0.10' below ground level and is exposed.

