



COUNTY OF HENRICO, VIRGINIA

MONUMENT DESCRIPTION



NAME OF STATION:

27

SET MAY 1998

VERTICAL CONTROL

NAVD 88 (Feet): ELEV. = 78.0

NAVD 88 (Meters): ELEV. = 23.77

HORIZONTAL CONTROL

Horizontal Control Based On NAD 83 (93):

VA STATE PLANE COORDINATES (SOUTH ZONE):

NORTHING (FEET): 3677624.207 NORTHING (METERS): 1120942.100

EASTING (FEET): 11823420.528 EASTING (METERS): 3603785.785

GEOGRAPHIC COORDINATE SYSTEM:

LATITUDE (Y): 37 25 2.42307

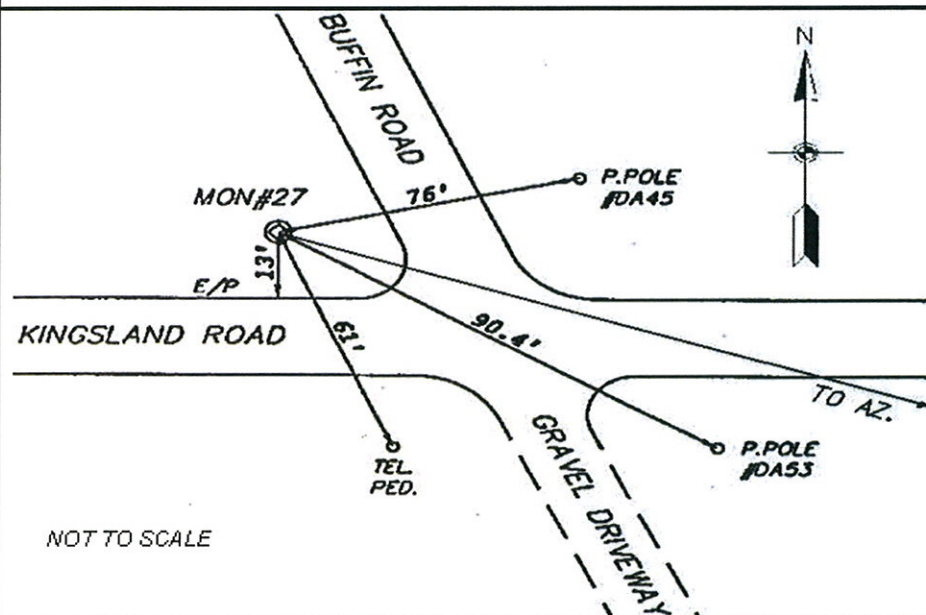
LONGITUDE (X): 77 19 38.95664

MONUMENT DESCRIPTION :

Station is a 2" Bronze Disk set in place in a 6" concrete monument

To reach the station from the intersection of Buffin Road and Route 5 (New Market Road), proceed south 2.1 miles along Buffin Road to the station on the right in the grass. Station is set flush with the ground.

Azimuth Mark Monument #27A





COUNTY OF HENRICO, VIRGINIA

MONUMENT DESCRIPTION



NAME OF STATION: **27AR** RE-OBSERVED SEPTEMBER 2008

VERTICAL CONTROL

NAVD 88 (Feet): ELEV. = 79.6

NAVD 88 (Meters): ELEV. = 24.25

HORIZONTAL CONTROL

Horizontal Control Based On NAD 83 (93):

VA STATE PLANE COORDINATES (SOUTH ZONE):

NORTHING (FEET): 3677618.278 NORTHING (METERS): 1120940.293

EASTING (FEET): 11824441.883 EASTING (METERS): 3604097.094

GEOGRAPHIC COORDINATE SYSTEM:

LATITUDE (Y): 37 25 2.23884

LONGITUDE (X): 77 19 26.29767

MONUMENT DESCRIPTION :

Station is a 2" Bronze Disk set in place in a 6" concrete monument

To reach the station from the intersection of Kingsland Road and WRVA Road, proceed south 0.06 mile along WRVA Road to the station on the right in the grass. Station is set flush with the ground. Monument was found disturbed and re-observed in September, 2008. A new monument was NOT set.

