



COUNTY OF HENRICO, VIRGINIA

MONUMENT DESCRIPTION



NAME OF STATION:

22

SET MAY 1998

VERTICAL CONTROL

NAVD 88 (Feet): ELEV. = 237.6

NAVD 88 (Meters): ELEV. = 72.42

HORIZONTAL CONTROL

Horizontal Control Based On NAD 83 (93):

VA STATE PLANE COORDINATES (SOUTH ZONE):

NORTHING (FEET): 3753860.297 NORTHING (METERS): 1144178.907

EASTING (FEET): 11768353.121 EASTING (METERS): 3587001.206

GEOGRAPHIC COORDINATE SYSTEM:

LATITUDE (Y): 37 37 42.34666

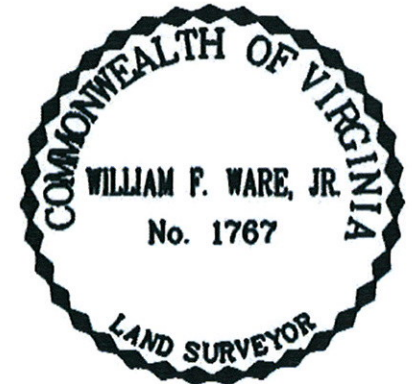
LONGITUDE (X): 77 30 51.67666

MONUMENT DESCRIPTION :

Station is a 2" Bronze Disk set in place in a 6" concrete monument

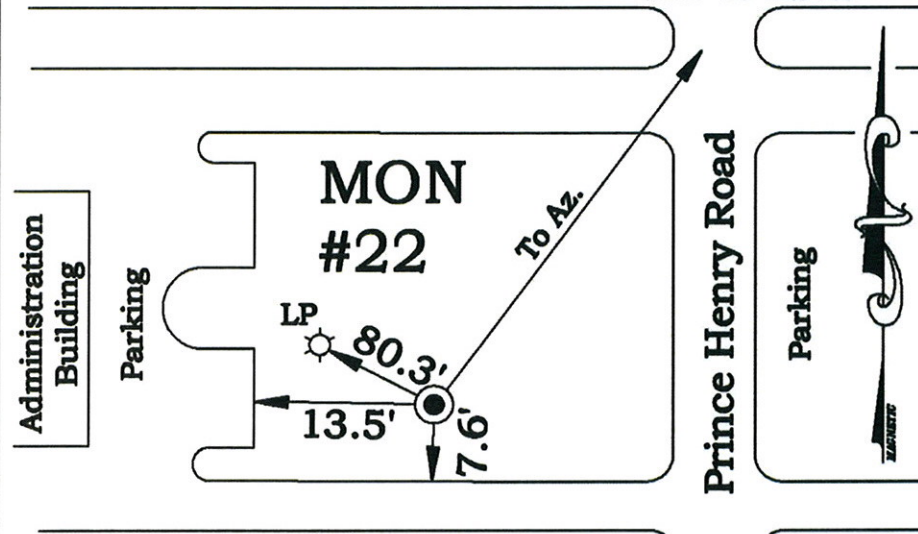
To reach the station from the intersection of Staples Mill Road and Parham Road, proceed west 0.4 mile along Parham Road, turn left on Prince Henry Road in to County Government Complex to the station near the second entrance on the right in the grass. Station is set flush with the ground.

Azimuth Mark Monument #22AR.



Parham Road

NOT TO SCALE





COUNTY OF HENRICO, VIRGINIA

MONUMENT DESCRIPTION



NAME OF STATION: **22AR** RESET SEPTEMBER 2008

VERTICAL CONTROL

NAVD 88 (Feet): ELEV. = 229.4
NAVD 88 (Meters): ELEV. = 69.91

HORIZONTAL CONTROL

Horizontal Control Based On NAD 83 (93):

VA STATE PLANE COORDINATES (SOUTH ZONE):

NORTHING (FEET): 3754635.411 NORTHING (METERS): 1144415.162
EASTING (FEET): 11768280.282 EASTING (METERS): 3586979.004

GEOGRAPHIC COORDINATE SYSTEM:

LATITUDE (Y): 37 37 50.01716
LONGITUDE (X): 77 30 52.48150

MONUMENT DESCRIPTION :

Station is a 2" Bronze Disk set in place in a 6" concrete monument.

To reach the station from the intersection of Staples Mill Road and Parham Road, proceed East 0.4 mile along Parham Road, turn at school entrance on the right and go 0.08 mile to station on the right in the grass. Station is set 1' behind the sidewalk and is flush with the ground.

