



COUNTY OF HENRICO, VIRGINIA

MONUMENT DESCRIPTION



NAME OF STATION:

12

SET MAY 1998

VERTICAL CONTROL

NAVD 88 (Feet): ELEV. = 209.6
NAVD 88 (Meters): ELEV. = 63.89

HORIZONTAL CONTROL

Horizontal Control Based On NAD 83 (93):

VA STATE PLANE COORDINATES (SOUTH ZONE):

NORTHING (FEET): 3762300.021 NORTHING (METERS): 1146751.340
EASTING (FEET): 11781275.162 EASTING (METERS): 3590939.852

GEOGRAPHIC COORDINATE SYSTEM:

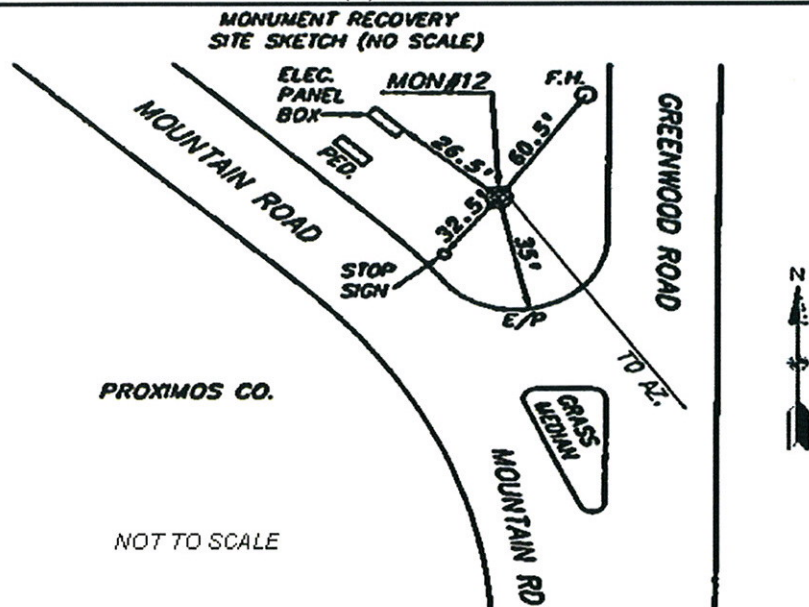
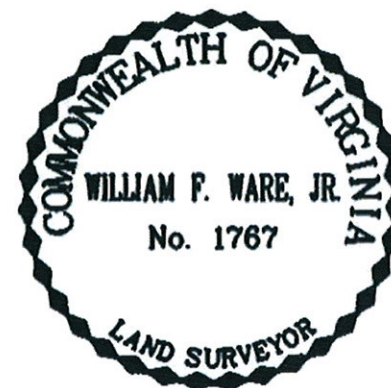
LATITUDE (Y): 37 39 4.41928
LONGITUDE (X): 77 28 9.90711

MONUMENT DESCRIPTION :

Station is a 2" Bronze Disk set in place in a 6" concrete monument

To reach the station from the intersection of Brook Road and Mountain Road, proceed north 0.9 miles along Mountain Road to the station on the right in the grass. Station is set 0.1 foot below the grade.

Azimuth Mark Monument #12AR





COUNTY OF HENRICO, VIRGINIA

MONUMENT DESCRIPTION



NAME OF STATION: **12AR**

RESET SEPTEMBER 2008

VERTICAL CONTROL

NAVD 88 (Feet): ELEV. = 207.7
NAVD 88 (Meters): ELEV. = 63.31

HORIZONTAL CONTROL

Horizontal Control Based On NAD 83 (93):

VA STATE PLANE COORDINATES (SOUTH ZONE):

NORTHING (FEET): 3761697.856 NORTHING (METERS): 1146567.800
EASTING (FEET): 11781730.762 EASTING (METERS): 3591078.718

GEOGRAPHIC COORDINATE SYSTEM:

LATITUDE (Y): 37 38 58.41697
LONGITUDE (X): 77 28 4.32403

MONUMENT DESCRIPTION :

Station is a 2" Bronze Disk set in place in a 6" concrete monument

To reach the station from the intersection of Brook Road and Mountain Road, proceed north 0.75 mile along Mountain Road to the station on the right in the grass. Station is set 0.1 foot below the grade. Located in the southeast quadrant of the intersection of Mountain Road and New York Avenue.

