



Willow Lawn Mobility Study

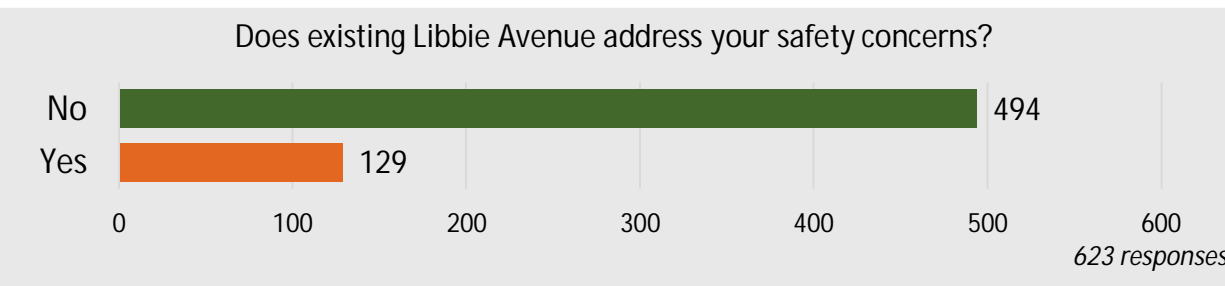
Libbie Avenue – West Broad Street to Wythe Avenue

Public Feedback Summary

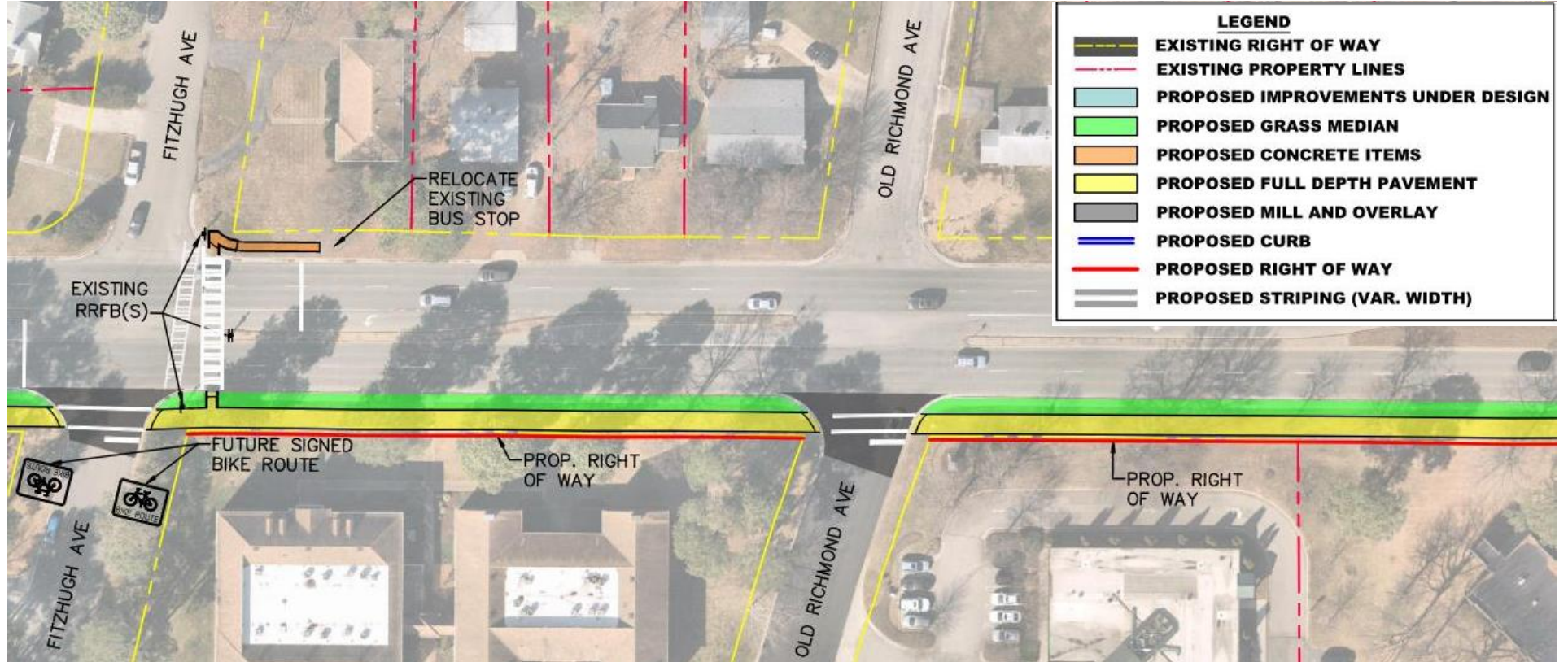
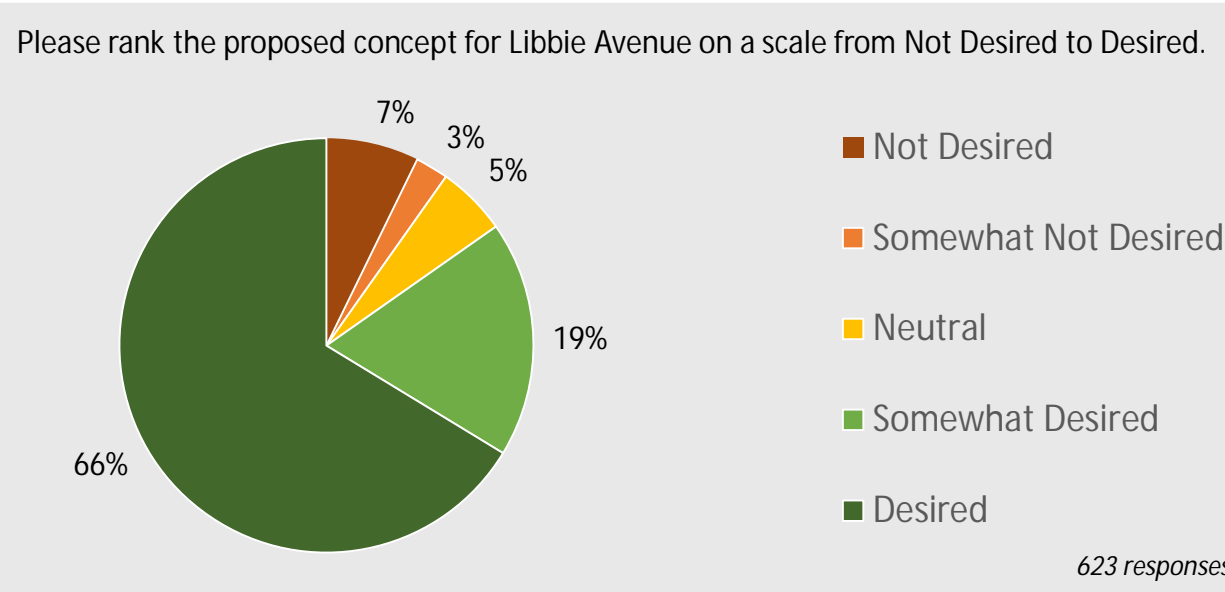
The Henrico County Department of Public Works is studying potential bicycle and pedestrian infrastructure in the Willow Lawn area. Design alternatives were developed for Libbie Avenue, Monument Avenue, and Willow Lawn Drive.

Community members provided feedback on design alternatives via an online public survey open from January 2, 2024, to January 19, 2024. Participants were asked to rate each proposed design and share their likelihood of walking and bicycling in the Willow Lawn area if the proposed designs are constructed. The survey was promoted on the Henrico County website, on social media, and via community newsletters and the media. A total of 623 responses were submitted either via the online survey or by email to the County.

Respondents indicated how each of the three corridors (Libbie Avenue, Monument Avenue, and Willow Lawn Drive) addressed safety concerns before rating proposed designs on a scale from not desired to desired. 79% of respondents have safety concerns that were not addressed by the existing conditions on Libbie Avenue.



The design concept for Libbie Avenue from West Broad Street to Wythe Avenue includes a shared use path on the southeastern side of the road protected by a grass buffer. Respondents view this design concept favorably with 66% rating the design as desired.

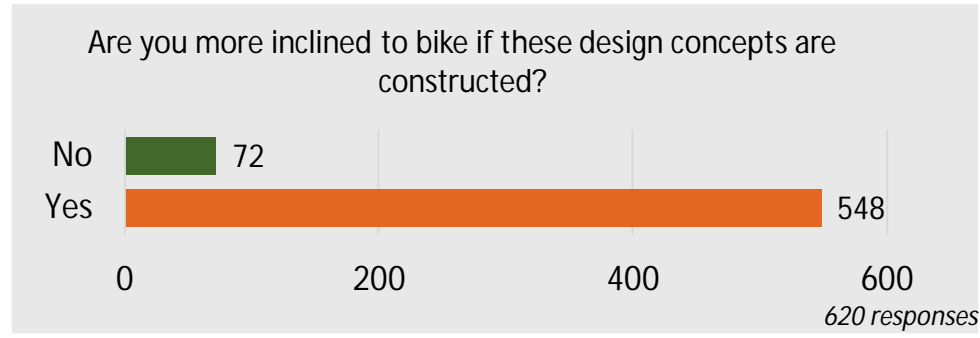
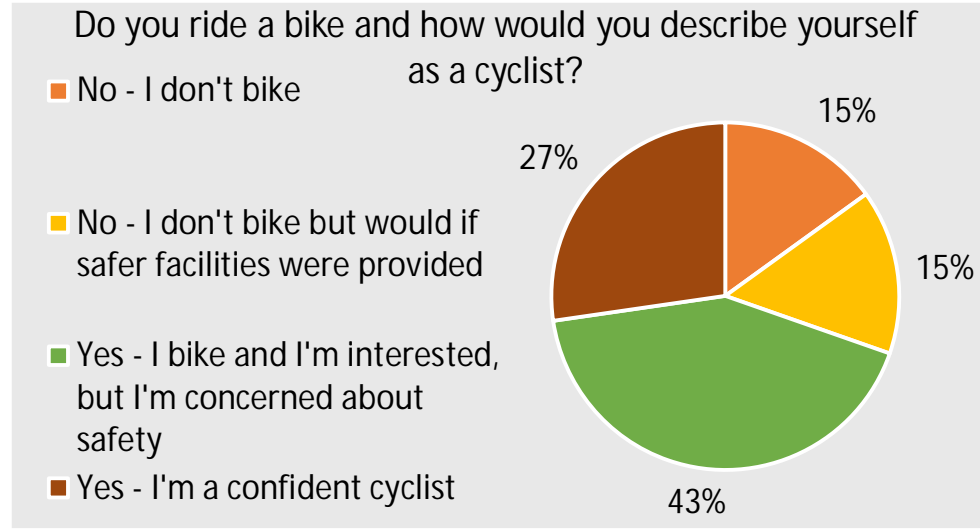


Proposed Design for Libbie Avenue

Comments on the proposed design for Libbie Avenue address how bicycle and pedestrian facilities will help promote safety for both commuters and recreational users. Comments include suggestions for future improvements, including high visibility crosswalks, enhanced pedestrian-scale lighting, and additional rectangular rapid flashing beacons (RRFBs) at pedestrian/bicycle crossings.

The public survey reiterates the significant safety concerns in the Willow Lawn area and how a lack of dedicated infrastructure for bicyclists discourages or prevents residents from bicycling in the area. The majority of respondents (57%) either do not bike due to safety concerns or do bike in spite of safety concerns.

The proposed improvements for the Willow Lawn area, including the construction of a shared use path on Libbie Avenue, will help inspire confidence in those who may have been hesitant to ride bicycles in the area – 88% of respondents indicate that they would be more inclined to bike if the design concepts for Libbie Avenue, Monument Avenue, and Willow Lawn Drive are constructed.





Willow Lawn Mobility Study

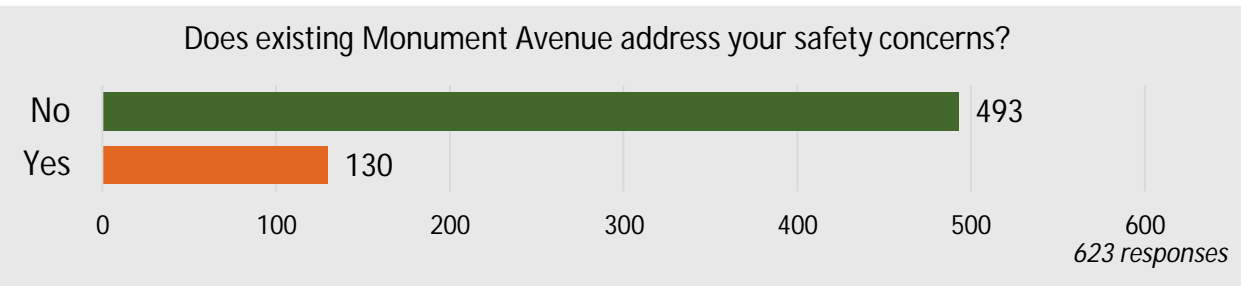
Monument Avenue – Westlyn Drive to Libbie Avenue

Public Feedback Summary

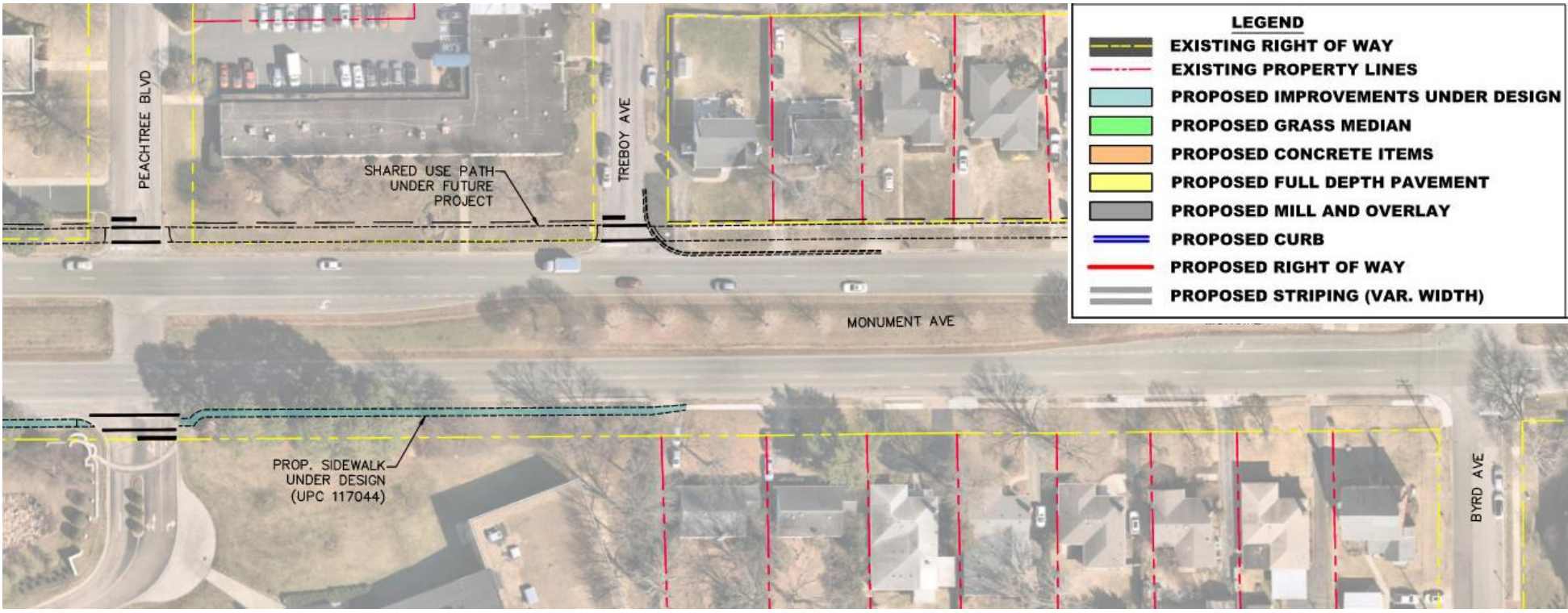
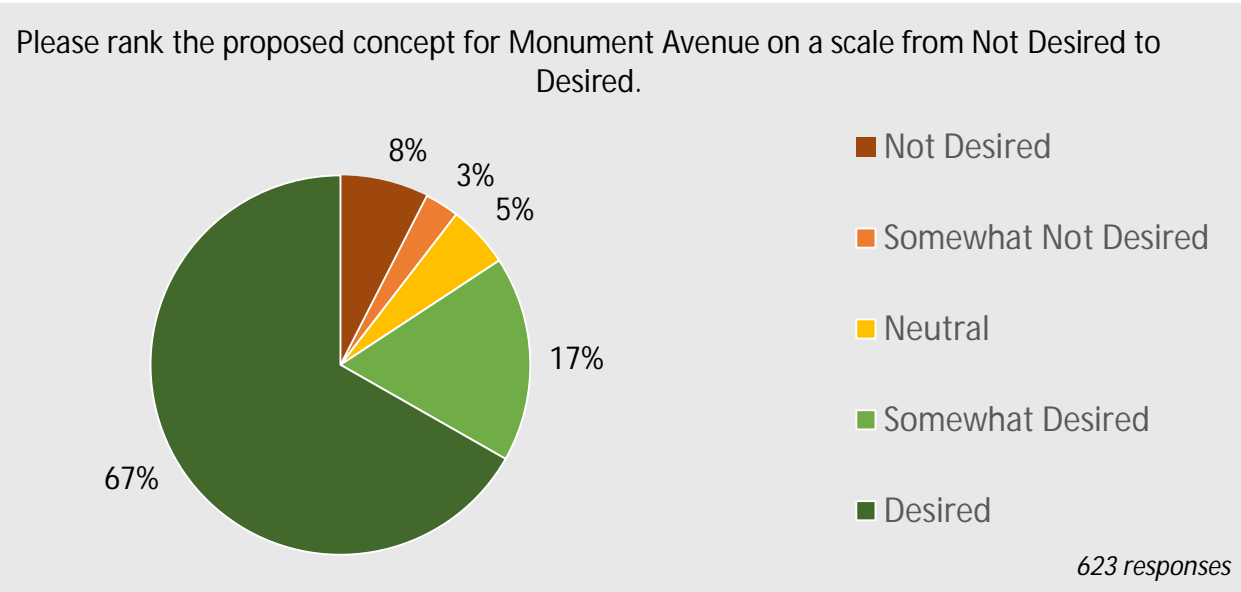
The Henrico County Department of Public Works is studying potential bicycle and pedestrian infrastructure in the Willow Lawn area. Design alternatives were developed for Libbie Avenue, Monument Avenue, and Willow Lawn Drive.

Community members provided feedback on design alternatives via an online public survey open from January 2, 2024, to January 19, 2024. Participants were asked to rate each proposed design and share their likelihood of walking and bicycling in the Willow Lawn area if the proposed designs are constructed. The survey was promoted on the Henrico County website, on social media, and via community newsletters and the media. A total of 623 responses were submitted either via the online survey or by email to the County.

Respondents indicated how each of the three corridors (Libbie Avenue, Monument Avenue, and Willow Lawn Drive) addressed safety concerns before rating proposed designs on a scale from not desired to desired. 79% of respondents have safety concerns that were not addressed by the existing conditions on Monument Avenue.



The design concept for Monument Avenue from Westlyn Avenue to Libbie Avenue includes sidewalks to close gaps on the southern side of the road. A shared use path would also be constructed in the future under a different project. Respondents view this design concept favorably with 67% rating the design as desired.

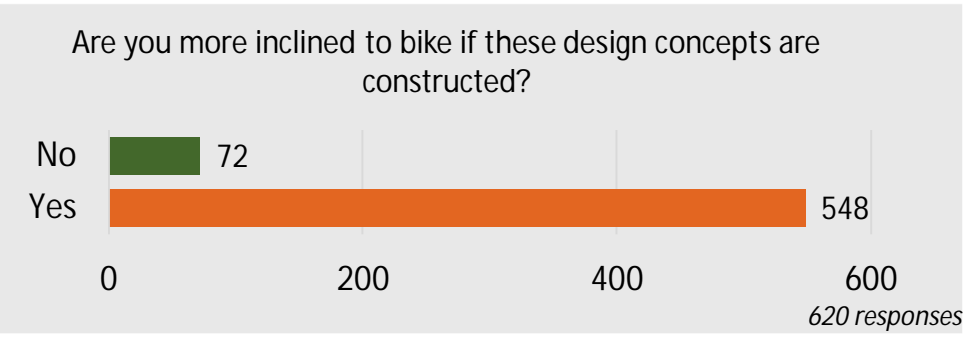
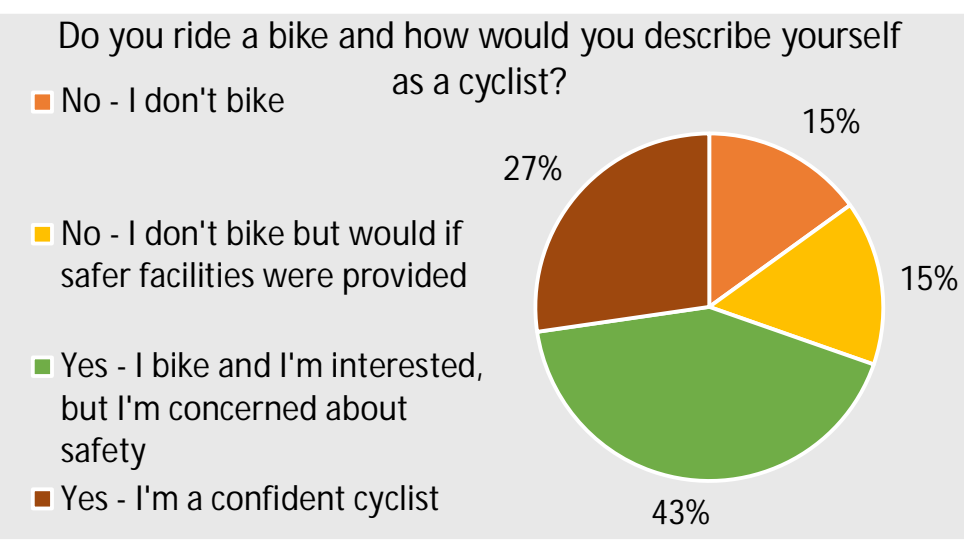


Proposed Design for Monument Avenue

Comments on the proposed designs for Monument Avenue emphasize the significance of improvements for pedestrians and bicyclists in the area. Respondents are eager for similar improvements to extend into the City of Richmond on Monument Avenue. Other comments include suggestions of pedestrian/bicycle crossing improvements, additional landscaping, and traffic calming measures.

The public survey reiterates the significant safety concerns in the Willow Lawn area and how a lack of dedicated infrastructure for bicyclists may discourage or prevent residents from bicycling in the area. The majority of respondents (57%) either do not bike due to safety concerns or do bike in spite of safety concerns.

The proposed improvements for the Willow Lawn area, including the construction of sidewalk on Monument Avenue, will help inspire confidence in those who may have been hesitant to ride bicycles in the area – 88% of respondents indicate that they would be more inclined to bike if the design concepts for Libbie Avenue, Monument Avenue, and Willow Lawn Drive are constructed.





Willow Lawn Mobility Study

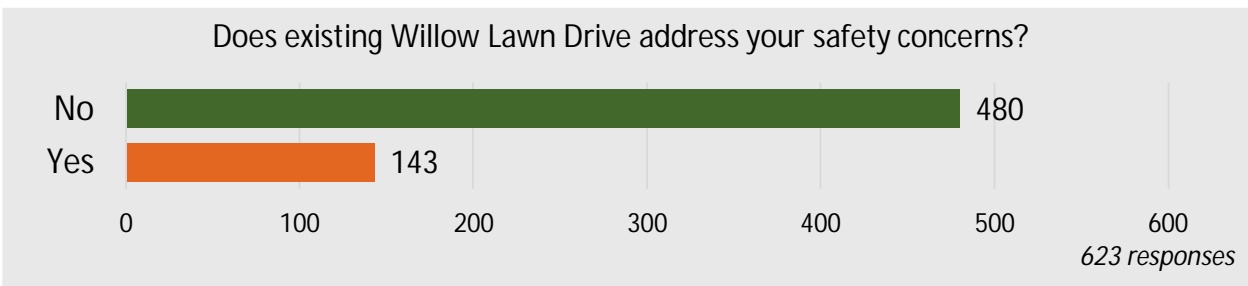
Willow Lawn Drive – Bromley Lane to Fitzhugh Avenue

Public Feedback Summary

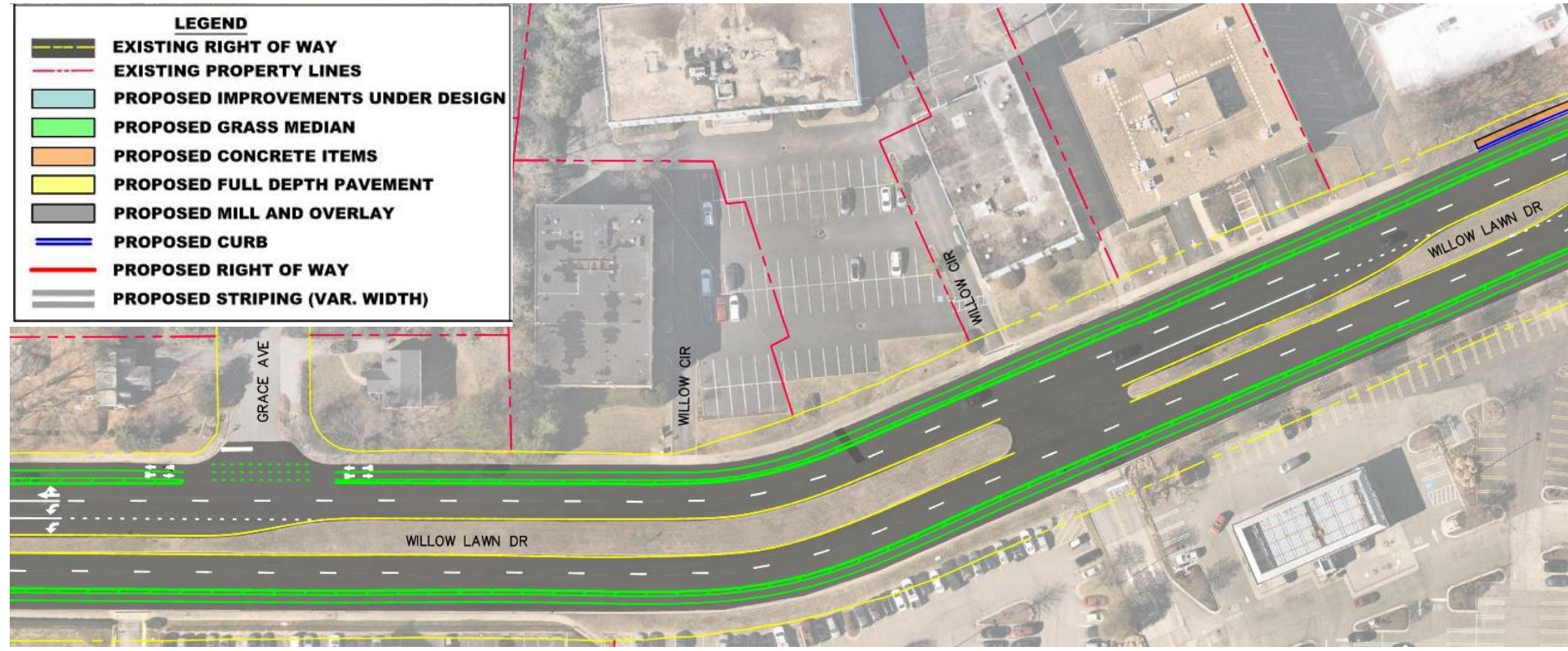
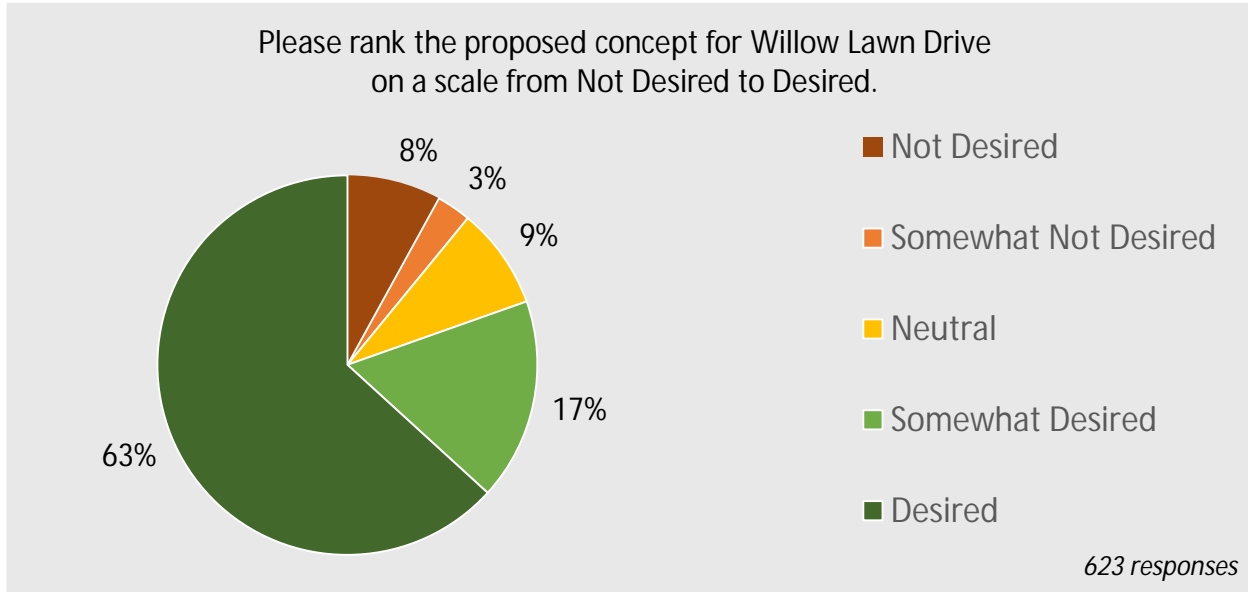
The Henrico County Department of Public Works is studying potential bicycle and pedestrian infrastructure in the Willow Lawn area. Design alternatives were developed for Libbie Avenue, Monument Avenue, and Willow Lawn Drive.

Community members provided feedback on design alternatives via an online public survey open from January 2, 2024, to January 19, 2024. Participants were asked to rate each proposed design and share their likelihood of walking and bicycling in the Willow Lawn area if the proposed designs are constructed. The survey was promoted on the Henrico County website, on social media, and via community newsletters and the media. A total of 623 responses were submitted either via the online survey or by email to the County.

Respondents indicated how each of the three corridors (Libbie Avenue, Monument Avenue, and Willow Lawn Drive) addressed safety concerns before rating proposed designs on a scale from not desired to desired. 78% of respondents have safety concerns that were not addressed by the existing conditions on Willow Lawn Drive.



The design concept for Willow Lawn Drive includes buffered cycle tracks (two-way protected bike lanes) on both sides of the road near the Willow Lawn shopping center that transition to buffered (one-way) bike lanes south of Monument Avenue. Respondents view this design concept favorably with 63% rating the design as desired.



Proposed Design for Willow Lawn Drive

Comments on the proposed design for Willow Lawn Drive include how a "road diet" may help slow vehicles around the curves of the road while providing safe routes for all road users. Other comments include how enhanced pedestrian crossings at the intersection of Willow Lawn Drive and Fitzhugh Avenue would help promote safe access to the shopping center and a desire for a hard physical barrier to protect bike lanes.

The public survey reiterates the significant safety concerns in the Willow Lawn area and how a lack of dedicated infrastructure for bicyclists may discourage or prevent residents from bicycling in the area. The majority of respondents (57%) either do not bike due to safety concerns or do bike in spite of safety concerns.

The proposed improvements for the Willow Lawn area, including the construction of two-way protected bike lanes on Willow Lawn Drive, will help inspire confidence in those who may have been hesitant to ride bicycles in the area – 88% of respondents indicated that they would be more inclined to bike if the design concepts for Libbie Avenue, Monument Avenue, and Willow Lawn Drive are constructed.

