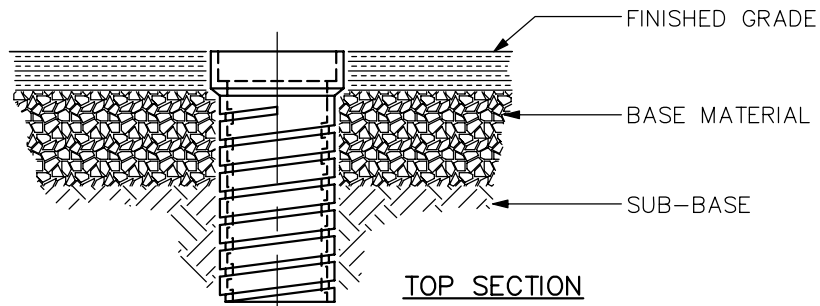
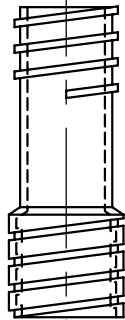


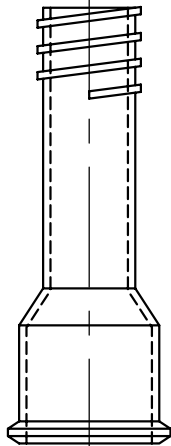
COUNTY OF HENRICO
DEPARTMENT OF PUBLIC UTILITIES



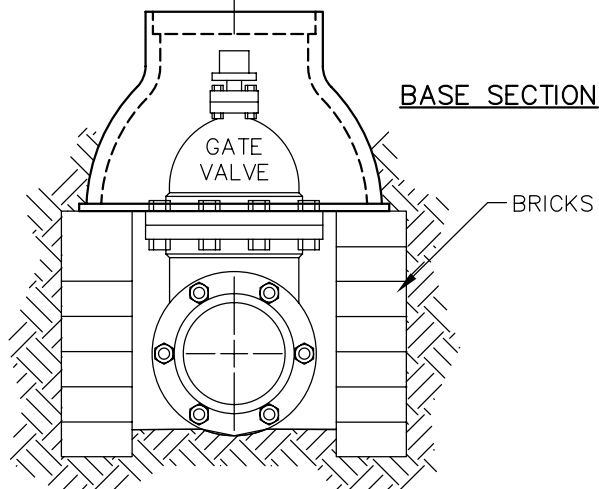
TOP SECTION



CENTER SECTION



BOTTOM SECTION



BASE SECTION

NOTES:

1. SCREW-TYPE ADJUSTABLE VALVE BOX SHALL BE CAST IRON.
2. VERTICAL ADJUSTMENT MADE BY SCREWING TOP SECTION AND/OR REPLACEMENT OF CENTER SECTION. VALVE BOX LID SHALL NOT BE CUT OR MODIFIED.

REVISIONS
06/20/2014

VALVE BOX
SCREW TYPE ADJUSTABLE

DRWG. NO.
D-475