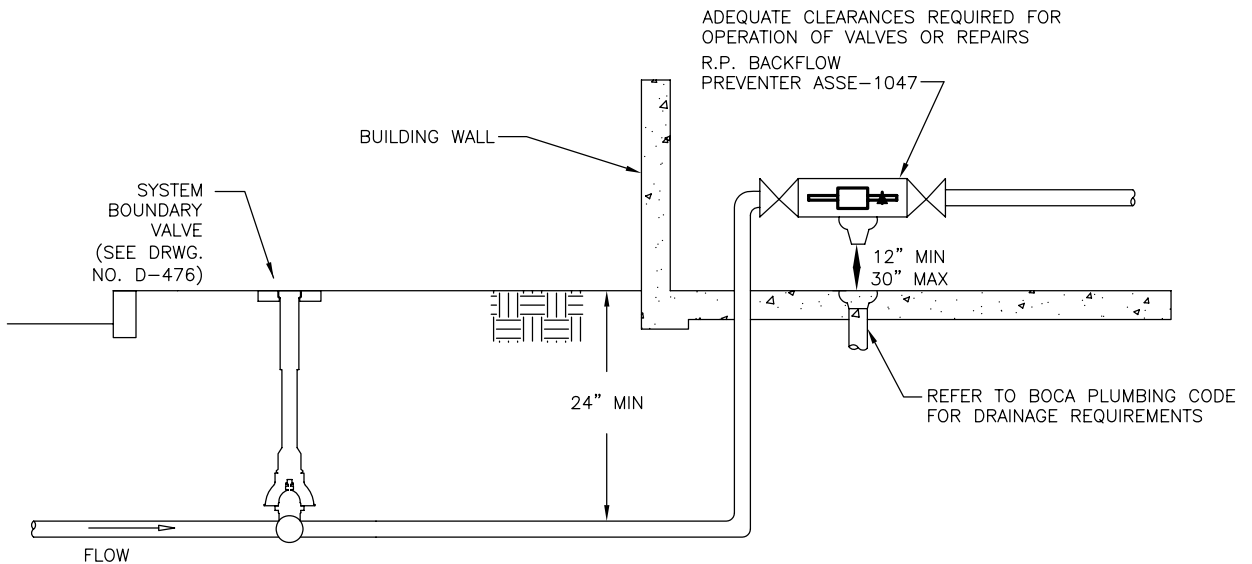
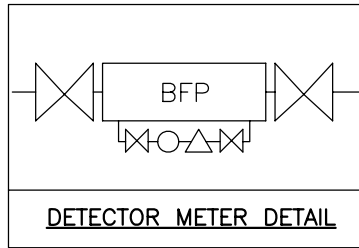
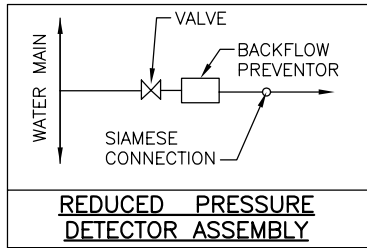


**COUNTY OF HENRICO
DEPARTMENT OF PUBLIC UTILITIES
HIGH HAZARD FIRE SYSTEM – INTERNAL**



PROCEDURE FOR FIRE SYSTEMS WHEN BACKFLOW PREVENTION IS REQUIRED:

1. SUBMIT PLANS TO DPU SEALED AND SIGNED BY A PROFESSIONAL ENGINEER FOR APPROVAL.
2. APPLY FOR A PLUMBING PERMIT FROM BUILDING INSPECTIONS.
3. INSTALL PIPING AND BACKFLOW PREVENTER, INCLUDING BRASS MALE TEST COCK ADAPTERS – (4) STRAIGHT HOSE ADAPTER FITTINGS, 1/4" S.A.E. 45° FLARE TUBE x 1/4"NPT, FOR CONNECTION TO TEST DEVICE. BACKFLOW PREVENTION DEVICES WILL BE INSTALLED AT THE WATER SERVICE CONNECTION AFTER THE SYSTEM BOUNDARY VALVE. REFER TO APPROVED DPU PLANS FOR TYPICAL INSTALLATION DETAILS. NO TAP-INS WILL BE PERMITTED FOR ANY PURPOSE BETWEEN THE SYSTEM BOUNDARY VALVE AND BACKFLOW DEVICE.
4. CALL THE BACKFLOW TECHNICIAN AT 727-8709 FOR INSPECTION OF THE BACKFLOW PREVENTER.
5. ALL FIRE SYSTEM BACKFLOW PREVENTION REQUIREMENTS SHALL BE MET BEFORE THE DOMESTIC METER WILL BE INSTALLED.
6. CALL BUILDING INSPECTIONS AT 501-4368 FOR INSPECTION FROM THE SYSTEM BOUNDARY VALVE THROUGH THE INTERNAL FIRE SYSTEM.
7. THE REDUCED PRESSURE DETECTOR ASSEMBLY'S SHUTOFF VALVES SHALL BE THE ONES APPROVED BY THE MANUFACTURER FOR THAT REDUCED PRESSURE DETECTOR ASSEMBLY. ALSO THE SHUTOFF VALVES SHALL MEET FIRE CODE STANDARDS.
8. REDUCED PRESSURE DETECTOR ASSEMBLY SHALL HAVE A MINIMUM CLEARANCE OF 24" FROM WALL TO TEST COCK ADAPTERS AND ALL OTHER CLEARANCES SHALL BE A MINIMUM OF 12".

REVISIONS 06/20/2014 09/18/2014	TYPICAL IN-BUILDING INSTALLATION REDUCED PRESSURE DETECTOR ASSEMBLY	DRWG. NO. D-435
---------------------------------------	--------------------------------------------------------------------------------	---------------------------