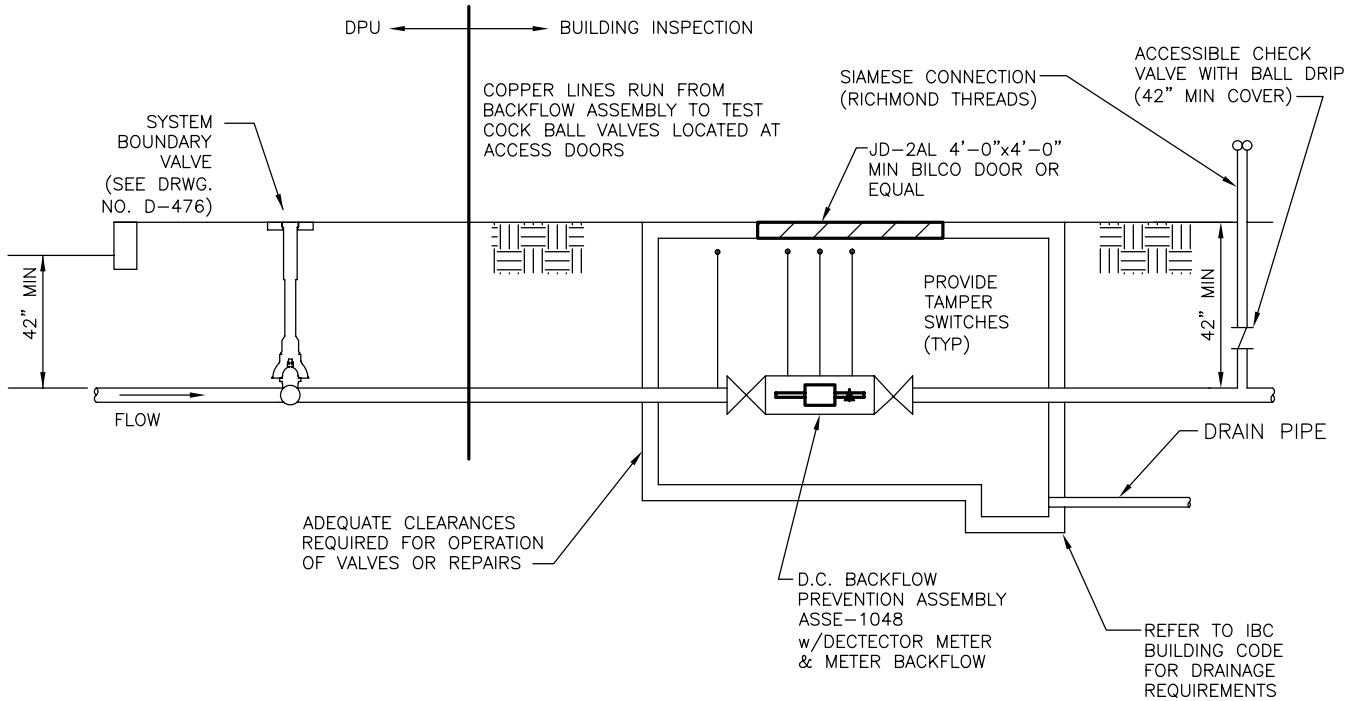
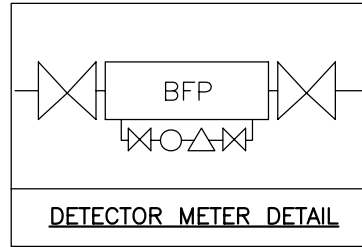
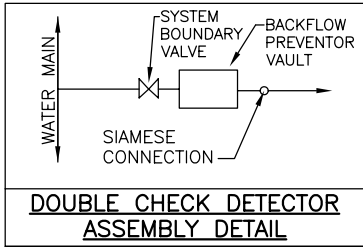


COUNTY OF HENRICO DEPARTMENT OF PUBLIC UTILITIES



PROCEDURE FOR FIRE SYSTEMS WHEN BACKFLOW PREVENTION IS REQUIRED:

1. SUBMIT PLANS TO DEPARTMENT OF PUBLIC UTILITIES (DPU) SEALED AND SIGNED BY A PROFESSIONAL ENGINEER FOR APPROVAL.
2. APPLY FOR A FIRE PERMIT (UNDERGROUND FIRE LINE) FROM COUNTY OF HENRICO, DEPARTMENT OF BUILDING INSPECTIONS.
3. INSTALL PIPING AND BACKFLOW PREVENTER, INCLUDING BRASS MALE TEST COCK ADAPTERS- (4) STRAIGHT HOSE ADAPTER FITTINGS, 1/4" S.A.E. 45 FLARE TUBE x 1/4" NPT, FOR CONNECTION TO TEST DEVICE. BACKFLOW PREVENTION DEVICES WILL BE INSTALLED AT THE WATER SERVICE CONNECTION AFTER THE DETECTOR CHECK. REFER TO APPROVED DPU PLANS FOR TYPICAL INSTALLATION DETAILS. NO TAP-INS WILL BE PERMITTED FOR ANY PURPOSE BETWEEN DETECTOR CHECK AND BACKFLOW DEVICE. PIPE AFTER THE DETECTOR CHECK SHALL BE 42" MINIMUM BELOW GRADE.
4. CALL BACKFLOW TECHNICIAN AT 727-8709 FOR INSPECTION OF THE BACKFLOW PREVENTER.
5. ALL FIRE SYSTEM BACKFLOW PREVENTION REQUIREMENTS SHALL BE MET BEFORE THE DOMESTIC METER WILL BE INSTALLED.
6. CALL BUILDING INSPECTIONS AT 501-4368 FOR INSPECTION FROM THE SYSTEM BOUNDARY VALVE THROUGH THE INTERNAL FIRE SYSTEM, USING YOUR UNDERGROUND FIRE LINE PERMIT NUMBER
7. THE DOUBLE CHECK DETECTOR ASSEMBLY'S SHUTOFF VALVES SHALL BE THE ONES APPROVED BY THE MANUFACTURER FOR THAT DOUBLE CHECK DETECTOR ASSEMBLY. ALSO THE SHUTOFF VALVES SHALL MEET FIRE CODE STANDARDS.
8. THE SIAMESE CONNECTION SHALL HAVE RICHMOND SPECIAL THREADS. AS AN OPTION, THE CONTRACTOR MAY INSTALL THE SIAMESE CONNECTIONS IN THE SAME VAULT AS THE DOUBLE CHECK DETECTOR ASSEMBLY AND EXTEND THE SIAMESE RISER THROUGH THE TOP OF VAULT. THE SIAMESE CONNECTION SHALL HAVE AN ACCESSIBLE CHECK VALVE WITH BALL DRIP LOCATED 42" MINIMUM BELOW FINISHED GRADE. BALL DRIP MUST BE PROVIDED WITH PROPER DRAINAGE.

REVISIONS
06/20/2014
09/18/2014

**TYPICAL INSTALLATION DOUBLE
CHECK DETECTOR ASSEMBLY
LOW HAZARD FIRE SYSTEM**

DRWG. NO.
D-420