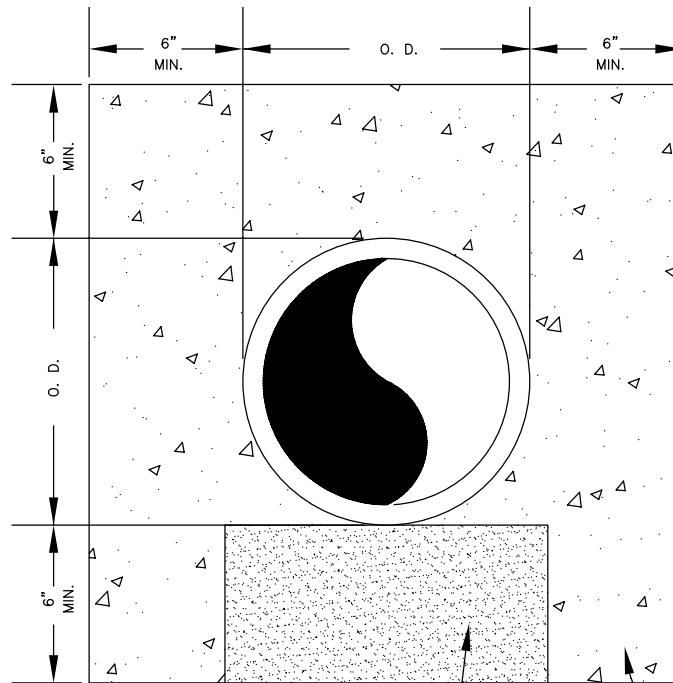


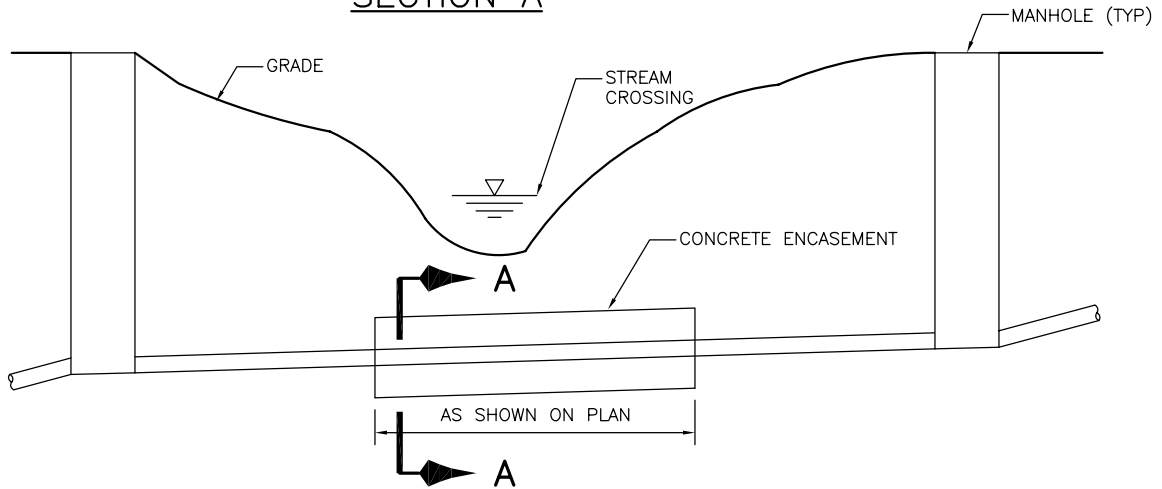
COUNTY OF HENRICO
DEPARTMENT OF PUBLIC UTILITIES



SOLID CONCRETE BLOCK OR CEMENT
OR CLAY BRICK SUPPORT (MINIMUM
OF ONE PER PIPE LENGTH)

3000# CONCRETE

SECTION A



TYPICAL PROFILE

NOTES:

1. ALL CONCRETE ENCASEMENTS MUST BE FORMED AND INSPECTED BY DPU INSPECTOR PRIOR TO PLACING CONCRETE AND BACKFILLING.
2. AT STREAM CROSSINGS, ENCASEMENT SHALL EXTEND A MINIMUM OF TEN FEET (10') BEYOND THE TOP OF BANK ON BOTH SIDES OF THE CROSSING.

REVISIONS
06/20/2014

CONCRETE ENCASEMENT
OF SANITARY SEWER PIPES

DRWG. NO.
D-205