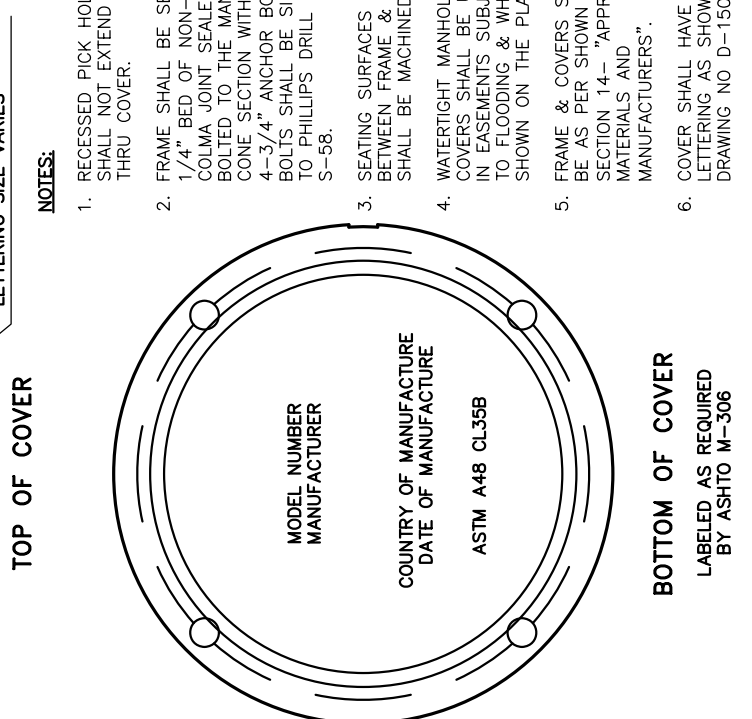
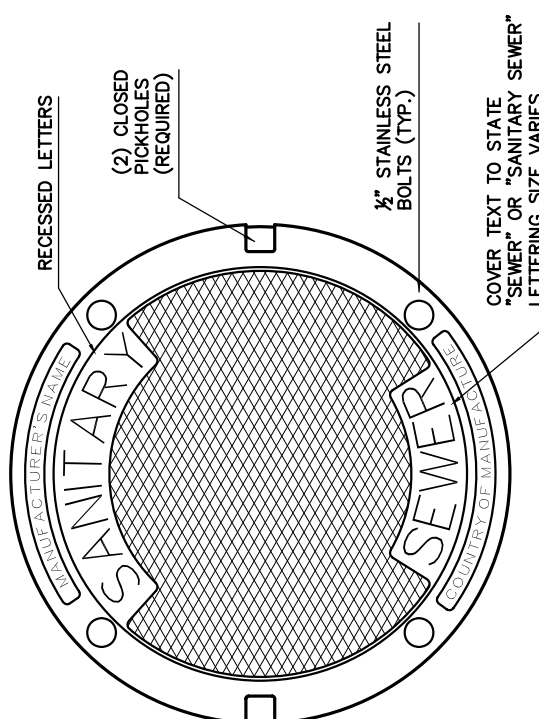
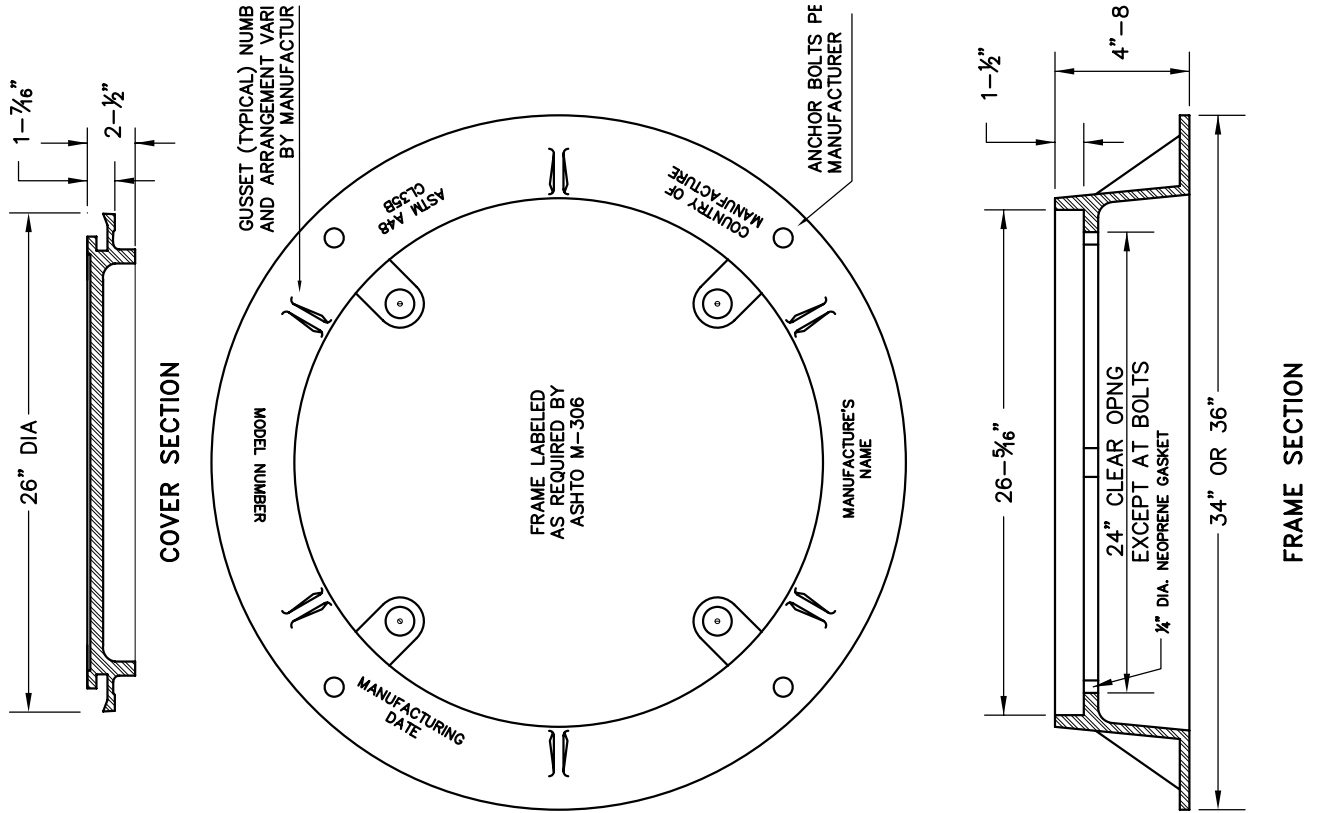


COUNTY OF HENRICO  
DEPARTMENT OF PUBLIC UTILITIES



**NOTES:**

1. RECESSED PICK HOLE SHALL NOT EXTEND CLEAR THRU COVER.
2. FRAME SHALL BE SET IN 1/4" BED OF NON-SAG COLMA JOINT SEALER & BOLTED TO THE MANHOLE CONE SECTION WITH 4-3/4" ANCHOR BOLTS. BOLTS SHALL BE SIMILAR TO PHILLIPS' DRILL CO. S-58.
3. SEATING SURFACES BETWEEN FRAME & COVER SHALL BE MACHINED.
4. WATERTIGHT MANHOLE COVERS SHALL BE USED IN EASEMENTS SUBJECT TO FLOODING & WHERE SHOWN ON THE PLANS.
5. FRAME & COVERS SHALL BE AS PER SHOWN IN SECTION 14- "APPROVED MATERIALS AND MANUFACTURERS".
6. COVER SHALL HAVE LETTERING AS SHOWN ON DRAWING NO D-150.

REVISIONS  
06/20/2014

VANDALPROOF/ WATER TIGHT  
MANHOLE FRAME & COVER  
(TRAFFIC RATED)

DRWG. NO.  
D-155