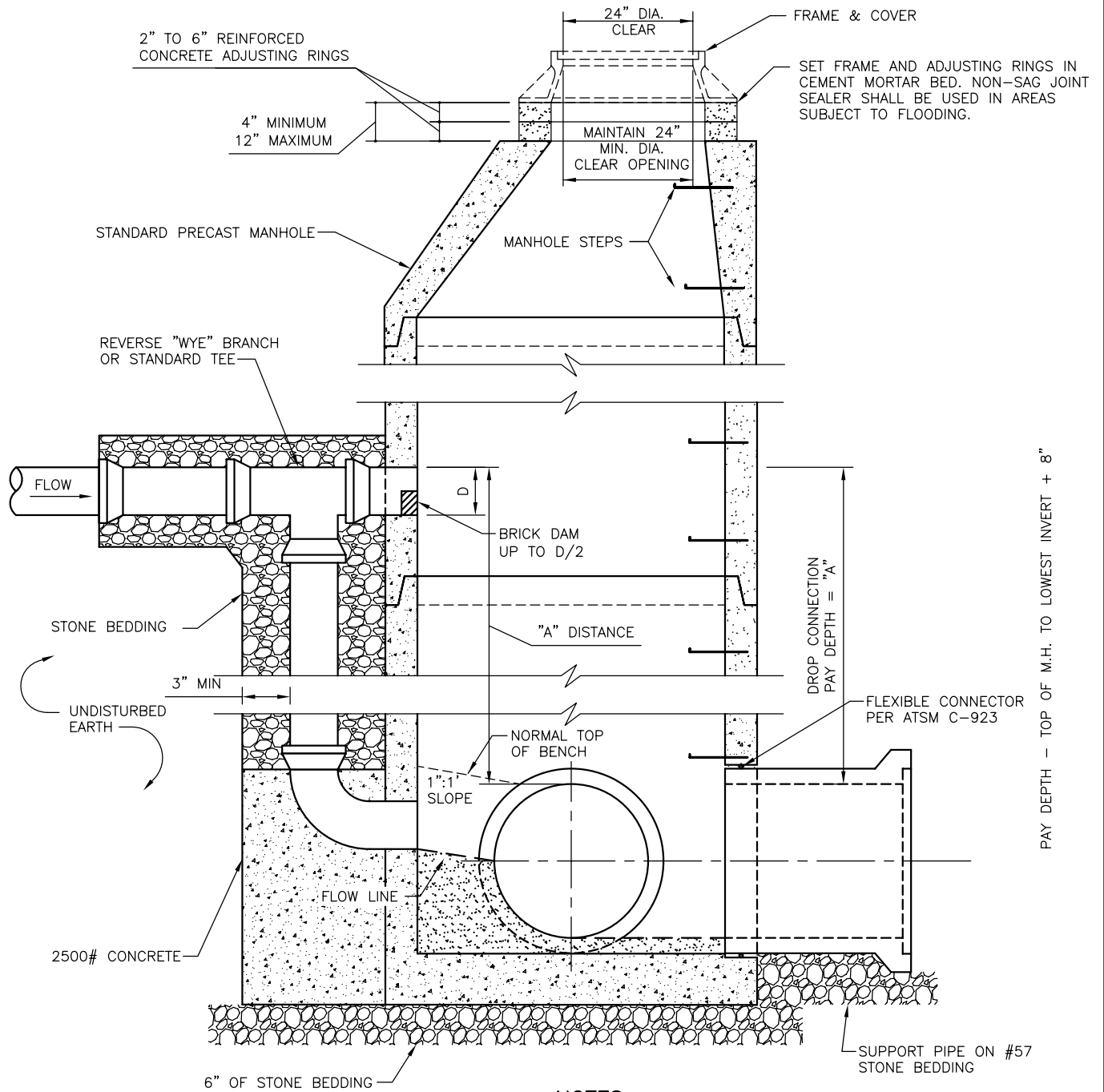


COUNTY OF HENRICO DEPARTMENT OF PUBLIC UTILITIES



NOTES:

1. WHERE "A" DISTANCE IS LESS THAN 2'-6" THE INCOMING SEWER SHALL BE LOWERED SO THAT THE TOP OF THE INCOMING SEWER IS NOT MORE THAN 6 INCHES ABOVE THE TOP OF THE OUTGOING SEWER.
2. WHERE "A" DISTANCE IS GREATER THAN 2'-6" USE STANDARD DROP CONNECTION.
3. D.I. PIPE AND FITTINGS SHALL BE USED FOR DROP CONNECTION.

REVISIONS
06/20/2014

DROP CONNECTION

DRWG. NO.
D-130