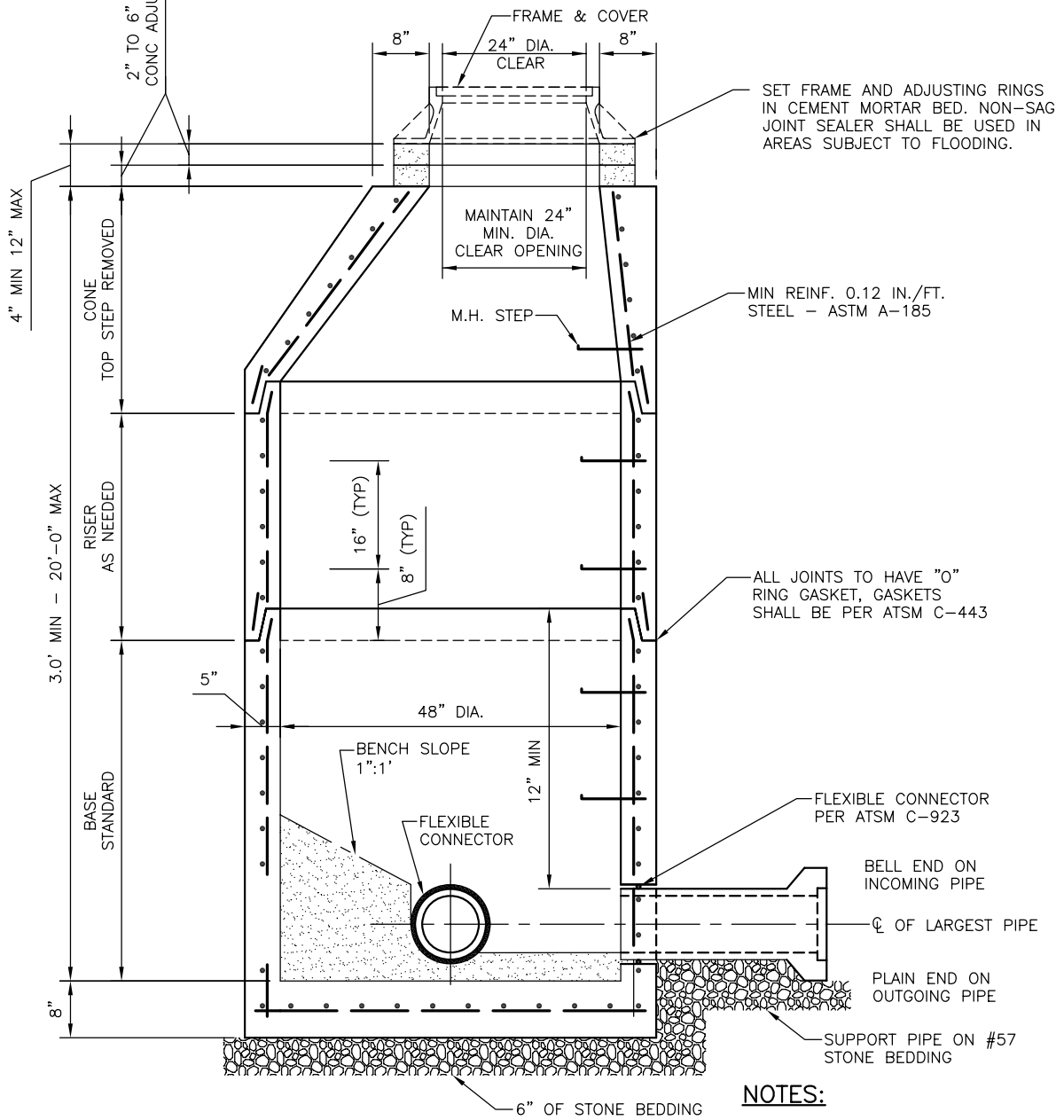


COUNTY OF HENRICO  
DEPARTMENT OF PUBLIC UTILITIES



**NOTES:**

1. BENCH MAY BE CONCRETE OR BRICK AND MORTAR.
2. WHERE FUTURE CONNECTIONS ARE SHOWN THEN BENCH SHALL BE SO FORMED.
3. STEPS SHOULD BE PLACED ON THE DOWNSTREAM SIDE OF THE MANHOLE.
4. MANHOLE CONSTRUCTION SHALL CONFORM TO ASTM SPEC. C-478.
5. MIN. CONC. STRENGTH AT 28 DAYS - 4000 P.S.I.

REVISIONS  
06/20/2014

MONITORING MANHOLE

DRWG. NO.  
D-125