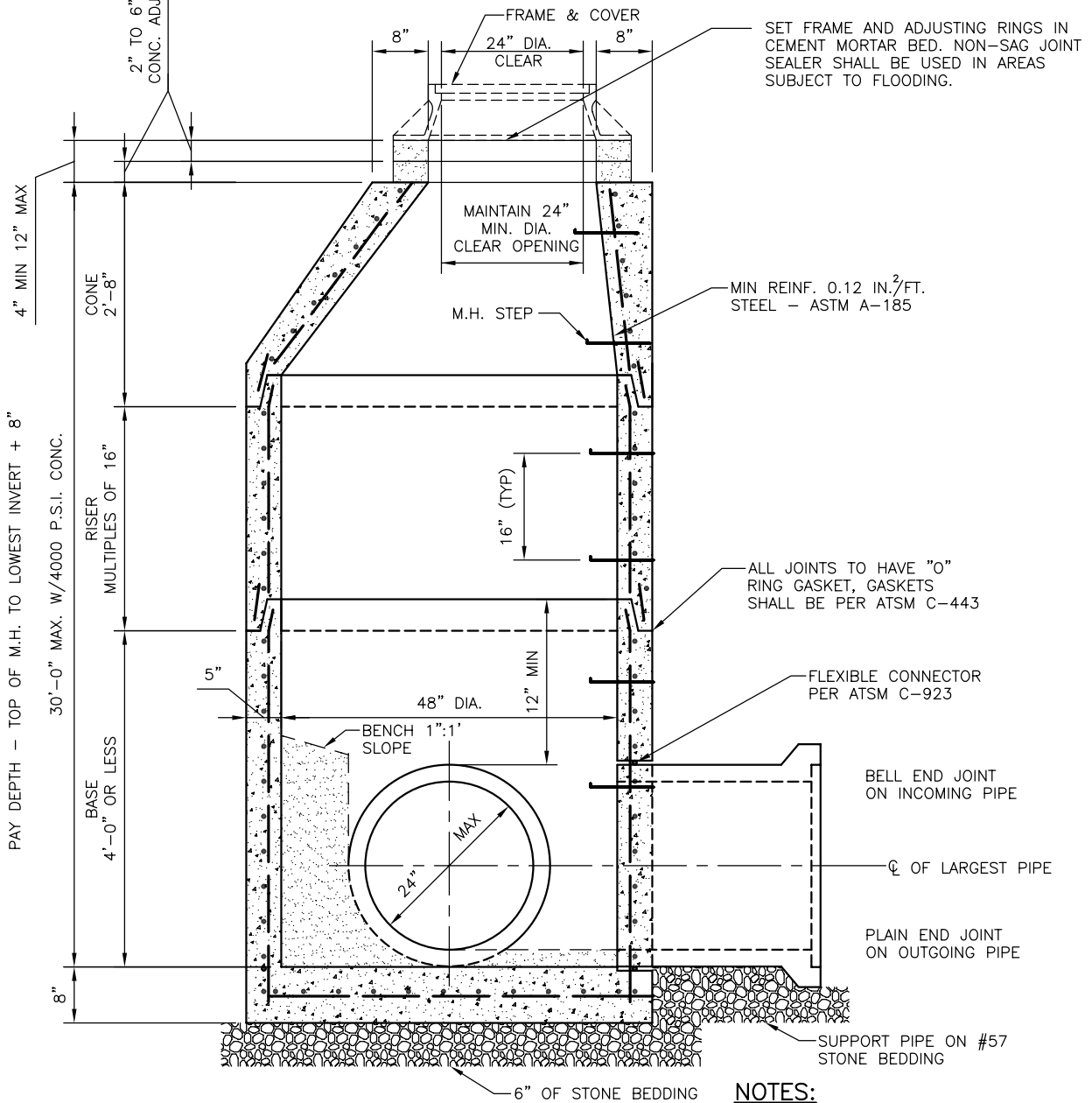


COUNTY OF HENRICO DEPARTMENT OF PUBLIC UTILITIES



NOTES:

1. BENCH MAY BE CONCRETE OR BRICK AND MORTAR.
2. STEPS SHOULD BE PLACED ON THE DOWNSTREAM SIDE OF THE MANHOLE.
3. MANHOLE CONSTRUCTION SHALL CONFORM TO ASTM SPEC C-913 OR C-478.
4. MIN CONCRETE STRENGTH AT 28 DAYS - 4000 P.S.I.

REVISIONS
06/20/2014

PRECAST CONCRETE MANHOLE
SEWERS 8" TO 24"

DRWG. NO.
D-100